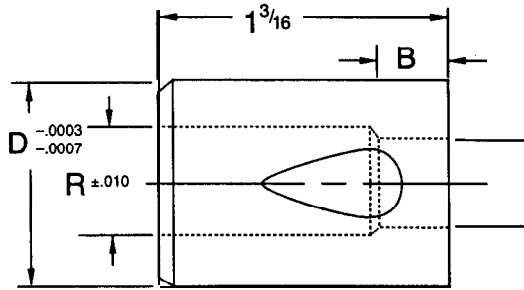
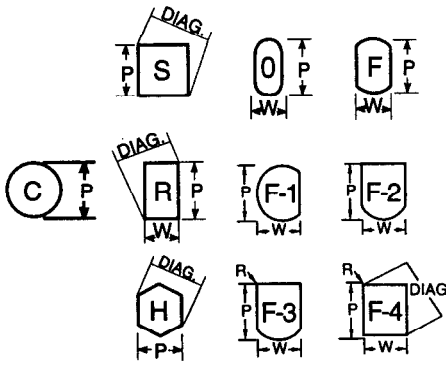




PIVOT PUNCH CORPORATION / BALL LOCK DIE BUTTONS

STEEL: A2, M2 R/C 60-62

AR()
A-2 STEEL
HR()
M-2 STEEL



ROUND

TOL. #1	TOL. #2
+0.005 -0.000	+0.005 -0.005
T•I•R .0005	T•I•R .001

SHAPE

TOL. #1	TOL. #2
±.0005	±.001
T•I•R .001	T•I•R .002

UNIVERSAL CODE: 1243 (SEE PAGE 175)

Shank		Min. B	Max. R	Round	Shape
D	Code			Range P	Min. Max. W DIAG.
.50Q0	4	.156	.228	.064-.195	.048-.195
.6250	5	.187	.312	.126-.285	.064-.285
.7500	6	.187	.375	.196-.345	.095-.345
.8750	7	.187	.468	.286-.435	.127-.435
1.0000	8	.250	.578	.346-.545	.158-.545
1.2500	9	.250	.687	.436-.655	.189-.655
1.5000	10	.250	.812	.546-.780	.220-.780
1.7500	11	.312	1.062	.656-1.035	.252-1.035

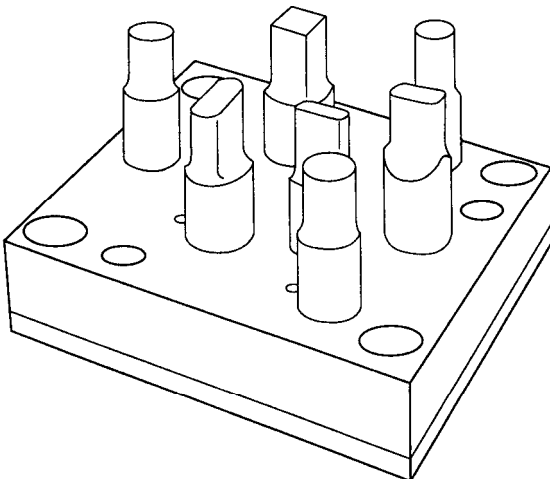
HOW TO ORDER TYPE D P
HRC 5 .187

special retainers

If close hole spacing prevents your use of standard retainers, Pivot Punch will make Special Retainers to your specifications. Pivot Punch will also furnish Special Die Button Retainers either in Ball Lock or Press Fit Type. Send drawings for quotations or recommendations without obligation.

The drawing below is intended as a reference only and not to limit size, shape or tolerance. Screw and dowel locations are fractional. Specify if closer tolerances are required. Pierce Points should be shown in Phantom to avoid errors.

* PROMPT SERVICE
* PROMPT DELIVERY



HOLE TYPE	TYPE FINISH	STD. TOLERANCES	
		DIA.	LOCATION
Screw	Machine	+1/32	±.005
Dowel	Ground	+0.002 -0.000	±.0002
Punch	Ground	+0.003 -0.000	±.0002
Ball Half Round point	Machine	—	—
Ball Hole Shaped Point	Ground	—	±0°5'