



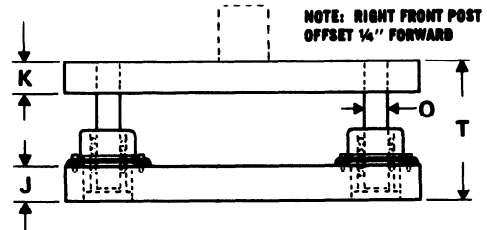
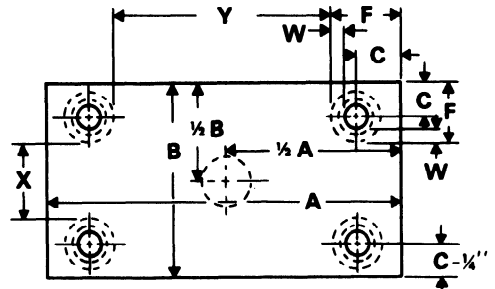
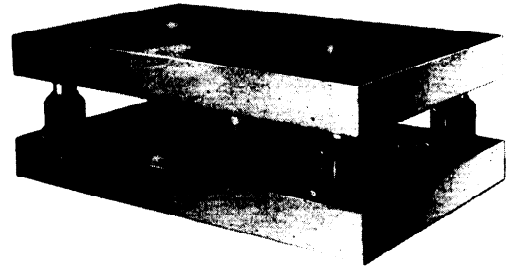
STANDARD

BALL BEARING

*Four Post
All-Steel Die Sets*

SERIES FP-37BB

ROTATING BALL CAGE



MINIMUM THICKNESS RECOMMENDED	K	1			1 1/4			1 1/2				
	J	1 1/4			1 1/2			1 3/4				
POST DIAMETER	O	1			1 1/4			1 1/2				
DIE SPACE	A →	8	10	12	14	16	18	20	22	24	26	28
B ↓	8	18	23	27	32	36	41	45	50	54	60	63
	10		28	34	40	45	51	57	62	68	74	79
	12			41	48	54	61	68	75	82	88	95
	14				56	64	71	79	87	95	103	111
	16					73	82	91	100	109	117	127
	18						92	102	112	122	133	143
	20							113	125	136	147	159
	22								137	150	162	175
	24									163	177	190
	26										192	206
	28											222
	30											
	32											
	34											
36												
40												
45												
50												
55												
60												

NOTE: DIE SPACE SIZES ARE GROUPED WITHIN GREEN LINES WHICH INDICATE SUGGESTED GUIDE POST DIAMETERS. GREEN NUMBERS INDICATE THE WEIGHT OF A SINGLE PLATE 1" THICK.