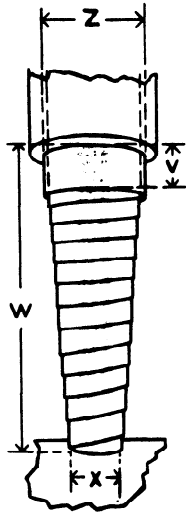
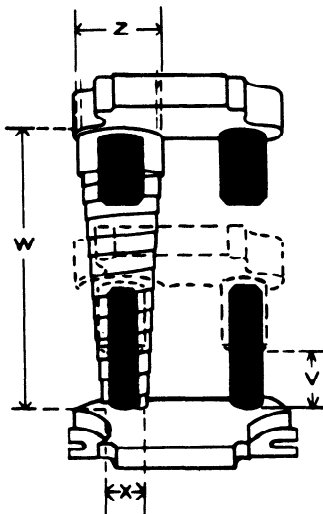




MATIS

STOCK SIZES • ORDERING INFORMATION

**CENTRYCO
COVERS**

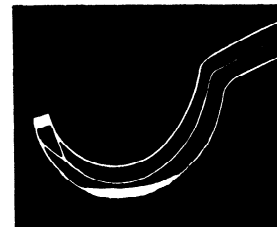


CAT #	V	W	X	Z	LBS.
052	1/2	2	1/2	7/8	1/16
054	1/2	4	1/2	1	1/16
0754	3/4	4	3/4	1 1/4	1/8
0756	3/4	6	3/4	1 1/4	1/8
0758	3/4	8	3/4	1 1/2	1/5
07510	3/4	10	3/4	1 1/2	1/5
14	3/4	4	1	1 1/2	1/5
16	3/4	6	1	1 5/8	1/5
18	3/4	8	1	1 3/4	1/4
110	1	10	1	1 7/8	1/3
156	1 1/8	6	1 1/8	1 7/8	1/2
1510	1 1/8	10	1 1/8	2 1/8	1/2
1514	1 3/8	14	1 1/4	2 1/8	3/4
26	1 1/8	6	1 1/2	2 3/8	1/2
210	1 3/8	10	1 1/2	2 3/8	2/3
214	2	14	1 1/2	2 3/8	1
218	2	18	1 1/2	2 1/2	1
224	2	24	1 1/2	2 5/8	1 1/2
230	2	30	1 1/2	2 3/4	1 1/2
256	1 3/8	6	2 1/4	2 7/8	3/4
2510	1 3/8	10	2 1/8	3 1/4	1 1/2
2514	2	14	2	2 7/8	1
2518	2	18	1 3/4	3	1 1/4
2524	2 1/2	24	1 3/4	3	1 1/2
2530	2 1/2	30	1 3/4	3	1 3/4
2536	3	36	1 3/4	3	2 3/4
2548	3	48	1 3/4	3 3/8	4 1/4
2560	3	60	1 3/4	3 3/4	5 3/4
2572	4	72	1 3/4	4	6 3/4
36	1 3/8	6	2 1/2	3 1/2	1 1/2
310	1 3/8	10	2 1/4	3 1/2	1 3/4
314	2	14	2 1/4	3 1/2	2 1/4
318	2	18	2 1/4	3 3/4	2 1/4
324	2 1/2	24	2 1/4	3 3/4	3 1/2
330	2 1/2	30	2 1/4	4	3 3/4
336	3	36	2 1/4	3 3/4	4 1/4
348	4	48	2 1/4	4	6
360	4	60	2 1/4	4	6 1/4
372	4	72	2 1/4	4 1/4	6 3/4

V	Ribbon Width (minimum operating clearance required)
W	Normal Working Length
X	Minimum I.D. Small End
Z	Maximum O.D. Large End
LBS.	Are Approx. Shipping Weight/Unit

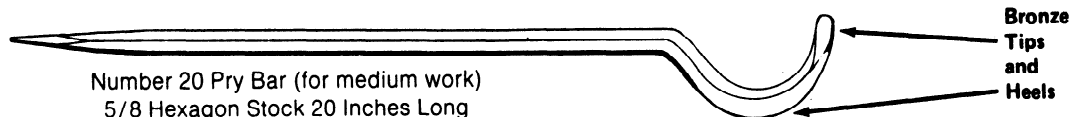
CAT #	V	W	X	Z	LBS.
356	1 3/8	6	3	4 1/4	2 1/4
3510	1 3/8	10	3	4 1/2	2 1/2
3514	2	14	3	4 1/2	3 1/2
3518	2	18	3	4 3/4	3 3/4
3524	2 1/2	24	2 1/2	3 7/8	4 1/4
3530	3	30	2 1/2	4 1/8	4 3/4
3536	3	36	2 1/2	4 1/2	5 3/4
3548	4	48	2 1/2	4 1/4	6 1/2
3560	4	60	2 1/2	4 1/2	9 1/2
3572	4	72	2 1/2	5	11
410	2	10	3 1/2	4 1/2	3
414	2	14	3 1/4	4 1/2	3
424	3	24	3	4 1/2	5 1/2
430	3	30	3	4 1/2	5 3/4
436	4	36	3	5	8
448	4	48	3	5	9 1/4
460	4	60	3	5 1/2	10
4510	2	10	3 1/2	5	2 1/2
4514	3	14	3 1/2	5	3 1/2
4518	3	18	3 1/2	5	3 3/4
4524	4	24	3 1/2	5	7
4536	4	36	3 1/2	5 1/4	7 3/4
56	2	6	4 1/2	5 1/2	2 1/4
510	3	10	4	5 1/2	3 1/4
514	3	14	4	5 1/2	3 3/4
518	3	18	4	5 1/2	5 3/4
524	4	24	4	5 1/2	6 1/4
536	4	36	4	5 1/2	8 3/4
556	2 1/2	6	5	6	2 1/2
5510	2 1/2	10	5	6	3 3/4
5514	3	14	5	6	4 1/2
5518	4	18	4 1/2	6	6 1/4
5524	4	24	4 1/2	6	7 1/4
5536	4	36	4 1/2	6 1/4	12
66	3	6	5 1/2	6 1/2	4 1/4
610	3	10	5 1/2	6 1/2	6
614	3	14	5	6 1/2	10 1/2
618	4	18	5	6 1/2	6
624	4	24	5	6 3/4	8 1/4

The CENTRYCO device is of light pressure, of tempered metal ribbon, spirally wrapped. It has sufficient pressure to maintain itself, at working length, between two parallel surfaces, on any piece of equipment. (The force varies from a few ounces to more than 50 pounds; standard sizes rarely exceeding 10 pounds). CENTRYCO units are made of various combinations of gage and ribbon width, depending on the diameters and lengths involved. They are made of resilient metal.



pry bars

These non-scuff pry bars are first class tools for die-makers, mold-makers and set-up men. Bronze tips and heels don't make scuff marks, eliminate damage to finished surfaces of dies and molds.



Number 20 Pry Bar (for medium work)
5/8 Hexagon Stock 20 Inches Long