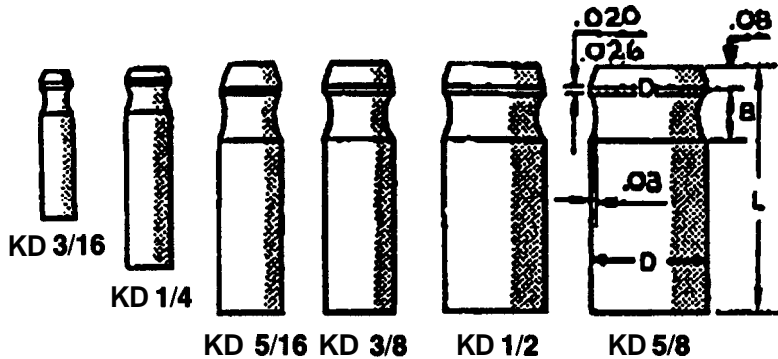




# KNOB DOWELS

## EASY OFF PRECISION RELOCATORS



Catalog NOS.	Dia. (D)	Length (L)	Knob (B)
KD 3/16	.1876 .1878	.75	.20
KD 1/4	.2501 .2503	1.00	.20
KD 5/16	.3126 .3128	1.25	.31
KD 3/8	.3751 .3753	1.25	.31
KD 1/2	.5001 .5003	1.25	.31
KD 5/8	.6251 .6253	1.25	.31

### How to Specify:

Qty.	Cat. No.
20	KD 5/16

ALLOY STEEL, CASE HARDENED, RC60-64

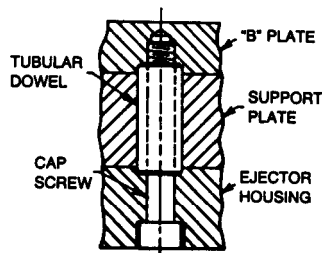
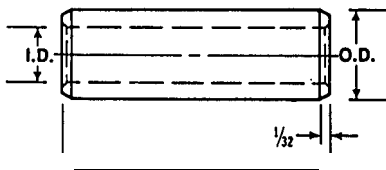
# STANDARD

## EXTRA LONG CAP SCREWS

Thread length is twice the diameter plus 1/8".

## TUBULAR DOWELS

Tubular Dowels are hardened and precision ground. They are used in mold base assemblies to align the "B" plate, support plate and the ejector housing.



SIZE-LENGTH
1/2-13 x 7 1/2"
1/2-13 x 8 1/2"
1/2-13 x 9"
1/2-13 x 9 1/2"
1/2-13 x 10"
1/2-13 x 11"
1/2-13 x 12"
5/8-11 x 7 1/2"
5/8-11 x 8 1/2"
5/8-11 x 9"
5/8-11 x 9 1/2"
5/8-11 x 10"
5/8-11 x 11"
5/8-11 x 12"
3/4-10 x 8 1/2"
3/4-10 x 9"
3/4-10 x 9 1/2"
3/4-10 x 10"
3/4-10 x 10 1/2"
3/4-10 x 11"
3/4-10 x 12"
3/4-10 x 14"

NOM. DIA.	±O.D. .0002	I.D.	L STANDARD LENGTHS						
			3/8	in	7/8	1 3/8	1 7/8	2 3/8	27m
3/8	.3752	.260	X		X				
5/8	.6252	.385		X		X	X	X	
3/4	.7502	.510	X	X		X	X	X	X
7/8	.8752	.635		X				X	X

X—Indicates Lengths Available