



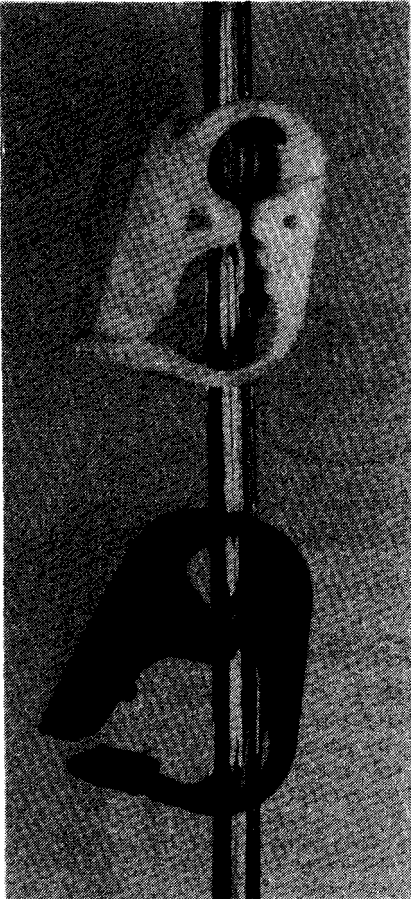
LUBRICANT FLOW CONTROL DEVICES AND TECHNIQUES

FEED TUBE CLAMPS

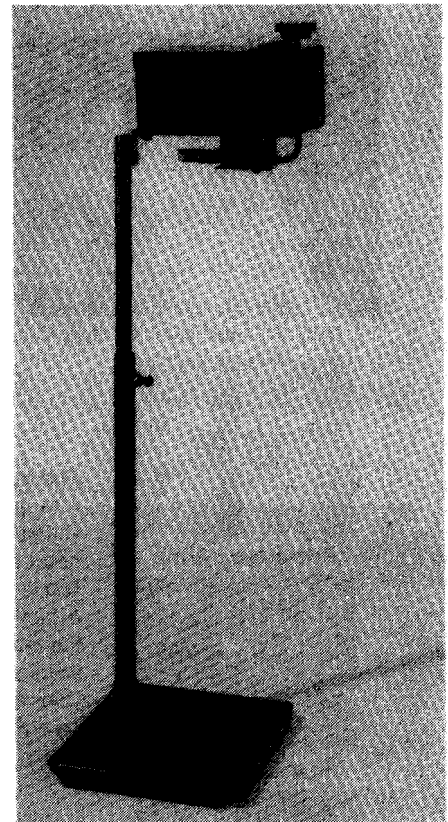
Feed Tube Clamps are included with both the SCR1E and the SCR1 Reservoirs.

Each Feed Tube has two flow control Tube Clamps. One Clamp is simply an ON-OFF (colored red) control. The second Clamp is an ADJUSTABLE POSITION Clamp (colored white) that allows the operator to restrict fluid flow in several, gradual steps from fully open to fully closed.

The benefit of having two Clamps is so that when the Adjustable Clamp has been set to the proper flow rate for the job, then that Clamp can be left in that position during the time that the job is running. If fluid needs to be shut off, then the red clamp can be used leaving the white clamp properly set at the correct flow rate for when the job is started up again. Proper flow rate will always be undisturbed.



STRIP C'LIP Stock Oiler Model HVC 4 horizontal-feed mounted on press. Can be adjusted to feed vertically or at any angle.



**SCR1 Reservoir (on stand)—
Single extension.**