



# Lamina<sup>®</sup> Marsh Mellow<sup>®</sup> Installation Instructions

## 1. Hole or Pocket Size

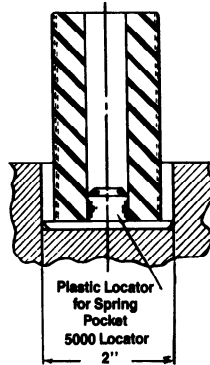
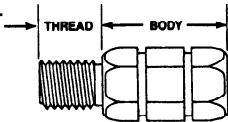
Marsh Mellow die springs were designed to insure proper fit in specific size holes or spring pockets. Insure that the hole or spring pocket is the proper size and that the Marsh Mellow die spring is centered.

Replace 2" Dia. Die Spring. A plastic locating device (Order # 5000) is available for the 1 5/8" Dia. Marsh Mellow die spring.

## 2. Locating Stud

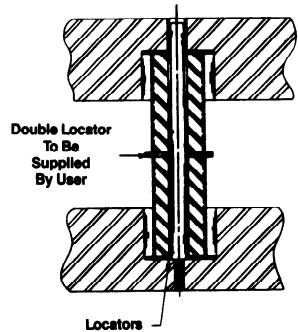
Threaded studs can be used as locators.

**Threaded Studs Available**  
(Press-fit) into MARSH MELLOW SPRINGS. To order add suffix "T" i.e. for stud.)

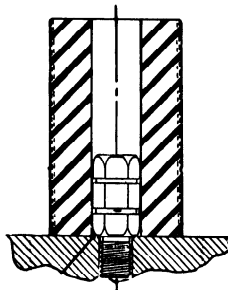


## 3. Locators

Locators can be made from washers and should fit closely around the rod. O.D. must accommodate bulge growth.

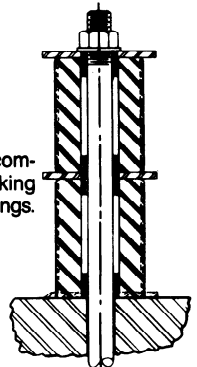


MARSH MELLOW I.D.	PART NO.	THREAD LENGTH	BODY LENGTH	OVERALL LENGTH
5/16"	T-STUD-1/4-20	1/2"	1 1/2"	2"
5/8"	T-STUD-3/8-16	5/8"	1 1/2"	2 1/8"
3/4"	T-STUD-1/2-13	3/4"	1 1/2"	2 1/4"
1"	T-STUD-3/4-10	1"	2"	3"



## 4. Guide Rods

Guide rods are recommended when stacking Marsh Mellow die springs.



*\*Regarding installing studs in Marsh Mellow Springs:  
The body length of the stud should never exceed 50% of the Marsh Mellow Spring free length. If such a condition does arise, the stud must be altered to allow for compression.*



Introducing . . .

the "SQUEEZE"™

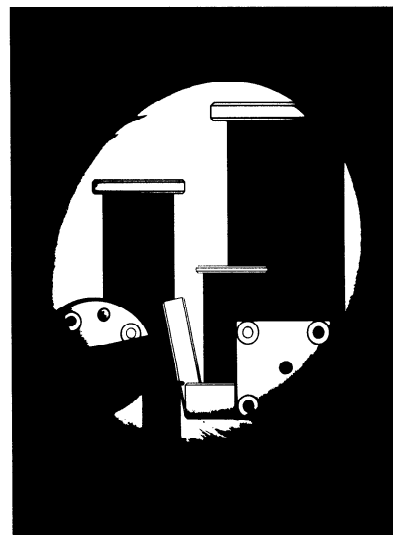
**An engineered fiber belted rubber spring designed to "squeeze" out nitrogen in 70% or more applications.**

- **Protective steel end caps provide:**  
 Mounting and securing  
 Preload  
 Elimination of the predetermined set  
 Allows for the bulge factor of the spring  
 Limits the amount of compression - cannot overtravel  
 Runs cooler to provide longer life  
 Ability to stack springs  
 Provides for proper proportions of diameter to length
- **Adjustable pre-load allows you to precisely match spring pressure to job timing requirements.**
- **The Squeeze™ is available with mounting plates that match hole patterns of standard nitrogen flanges which facilitates retrofitting of existing dies.**
- **Quick and safe operation with no maintenance.**  
 No leaks!  
 No lines!  
 No headaches!

Patent applied for



Factory tested to assure reliability!



The SQUEEZE™ is the perfect compliment to our extensive line of pressure control devices.