

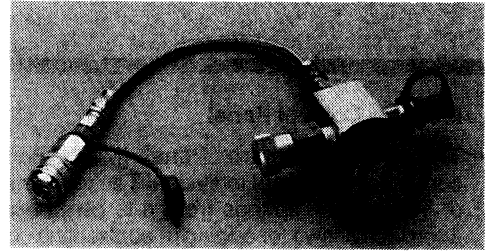


# TANKER 2 ACCESSORIES

## Service Gauge Assembly

Charging and discharging the Tanker 2 for use in the self-contained mode is simple, when the MGA-3000 is used.

**NOTE:** The SGA-400 and SGA-2000 can be converted to charge Tanker 2.



## Male Quick Disconnects (Charge Fittings)

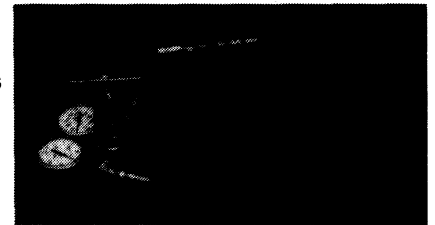
The T2-770-4 quick disconnect is used to charge the 750, 1500, 3000, 5000 & 7500 model Tanker 2 gas springs.



T2-770-4  
(O-RING 3-904)

## Nitrogen Charging Assembly

The NCA-2600 charging assembly is used to transfer nitrogen from a commercial bottle to Tanker 2 gas springs. The charging assembly includes a CGA-580 bottle fitting, regulator with bottle and system pressure gauges, shut-off valve and 10 feet of high pressure hose with a fitting for the control panel quick disconnect inlet.



**NOTE:** The NCA-2600-HP is available for use with 3000-5000 psi bottles. Bottle fitting provided with HP, CGA-680.

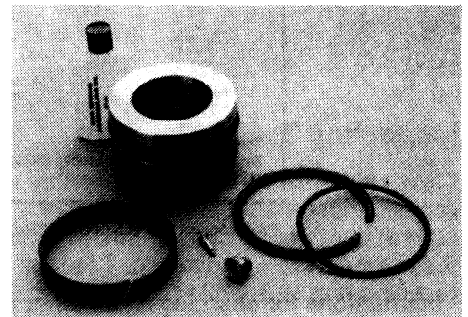
## Seal Kits

Tanker 2 gas springs are field repairable. There is a different seal kit for each gas spring size.

Detailed instruction sheets are included with each seal kit.

## Seal Kits

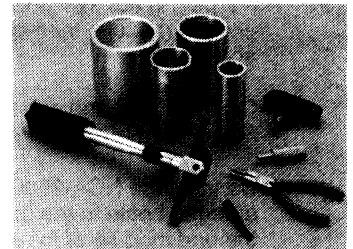
Size	Seal Kit Number
T2-750	T2SK-750
T2A-1500 T2B-1500	T2SK-1500
T2A-3000 T2B-3000	T2SK-3000
T2A-5000 T2B-5000	T2SK-5000
T2-7500	T2SK-7500



## Tool Kits

The T2TK tool kit includes the tools necessary to disassemble and reassemble Tanker 2 gas springs. Individual components are available. Please contact Teledyne Fluid Systems for details.

Inlet valve removal tool: Part No. T2TK-IN



## Force Test Press (Part No. T2-6TX6HTP)

A force test press is available for use with Tanker 2 gas spring. Please contact Teledyne Fluid Systems for details.