



INCH READY-2000



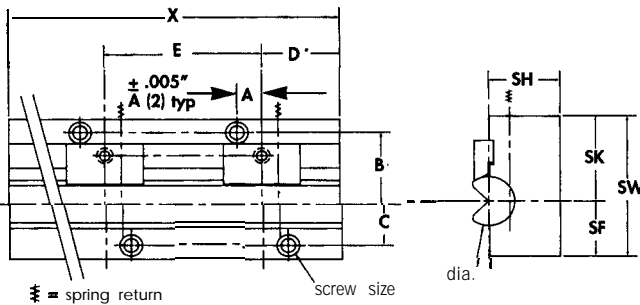
READY-2000 Custom Lengths

- READY'S CNC grinding technology delivers custom lengths up to **36"** long at **attractive prices.**
- **Longer** lengths achieved by butting **two** or more units **end-to-end**, **.010"** gap.

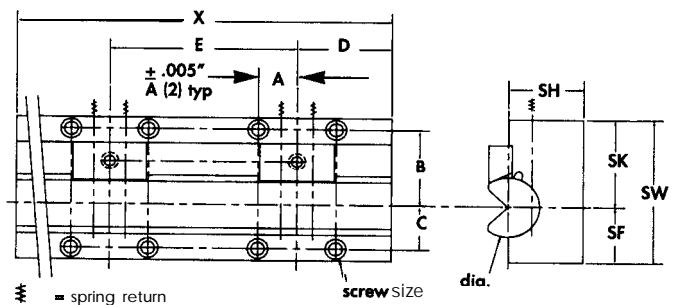
• **Now** available up to 36" long.

• **Specify** your **desired length (X)** and **READY will deliver.**

REC 62, 100 and 150 Repeating Hole Patterns
(for 5/8", 1", and 1 1/2" Diameter Rackers)



REC 200, 250 and 300 Repeating Hole Patterns
(for 2", 2 1/2", and 3" Diameter Rackers)



Minimum/Maximum lengths:

1. Charts and drawings showing hole locations start at nominal lengths. Custom lengths start very short, at catalog Gib Length (GL) dimensions.

2. Mounting hole patterns for shorter, custom lengths are available upon request by application.

REC 62	Minimum 1.125" (GL)	Maximum 24"*
REC 100	Minimum 1.500" (GL)	Maximum 24"*
REC 150	Minimum 2.000" (GL)	Maximum 36"
REC 200	Minimum 2.500" (GL)	Maximum 36"
REC 250	Minimum 3.000" (GL)	Maximum 36"
REC 300	Minimum 3.500" (GL)	Maximum 36"

3. Standard in stock lengths of READY-2000 are cataloged on page 7. These ship fast and cost less. The Hard Inch Bender, pages 4 and 5, is available in custom lengths and can further reduce your tooling budget.

NOTE:

- Counterbored holes standard, tapped available as specials.

Model and Racker Diameter	"X" Length	A	B	C	D	E	SHCS size
REC 62 5/8" dia.	lengths 6 - 12"	.354"	1.181"	.551"	"X" / 8	"X" / 4	#10
REC 100 1" dia.		.472"	1.476"	.846"	"X" / 8	"X" / 4	1/4
REC 150 1 1/2" dia.		.669"	1.969"	1.181"	"X" / 6	"X" / 3	5/16
REC 62 5/8" dia.	lengths 12.5 - 24"	.354"	1.181"	.551"	"X" / 12	"X" / 6	#10
REC 100 1" dia.		.472"	1.476"	.846"	"X" / 12	"X" / 6	1/4
REC 150 1 1/2" dia.		.669"	1.969"	1.181"	"X" / 10	"X" / 5	5/16
REC 62 5/8" dia.	(see * below) lengths 24.5 - 36"	.354"	1.181"	.551"	"X" / 16	"X" / 8	#10
REC 100 1" dia.		.472"	1.476"	.846"	"X" / 16	"X" / 8	1/4
REC 150 1 1/2" dia.		.669"	1.969"	1.181"	"X" / 14	"X" / 7	5/16
REC 200 2" dia.	lengths 8 - 12"	1.240"	2.598"	1.476"	"X" / 4	"X" / 2	3/8
REC 250 2 1/2" dia.		1.378"	3.110"	1.732"			1/2
REC 300 3" dia.		1.575"	3.642"	2.244"			1/2
REC 200 2" dia.	lengths 12.5 - 24"	1.240"	2.598"	1.476"	"X" / 6	"X" / 3	3/8
REC 250 2 1/2" dia.		1.378"	3.110"	1.732"			1/2
REC 300 3" dia.		1.575"	3.642"	2.244"			1/2
REC 200 2" dia.	lengths 24.5 - 36"	1.240"	2.598"	1.476"	"X" / 10	"X" / 5	3/8
REC 250 2 1/2" dia.		1.378"	3.110"	1.732"			1/2
REC 300 3" dia.		1.575"	3.642"	2.244"			1/2

* REC 62 and REC 100 lengths stop at 24". Future units may be available 36" long. Call READY