



METRIC READY-MET

• **READY's CNC grinding technology, delivers lengths up to 915 mm long at attractive prices.**

• **Longer lengths achieved by bunting two or more units end-to-end, .25 mm gap.**



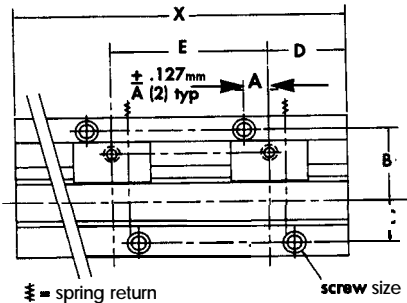
READY-MET Custom Lengths

• **Now available** up to 915 mm long.

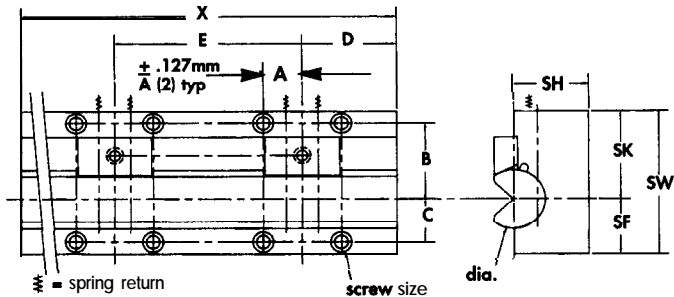
• **Specify your desired length (X) and READY will deliver.**

NOTE: this is an inch product, the same as READY-2000 on pages 6 to 8, except with metric mounting holes.

RMC 62, 100 and 150 Repeating Hole Patterns
(for 5/8", 1", and 1 1/2" Diameter Rockers)



RMC 200, 250 and 300 Repeating Hole Patterns
(for 2", 2 1/2", and 3" Diameter Rockers)



Minimum/Maximum lengths:

1. Charts and drawings showing hole locations, etc., start at nominal lengths. Custom lengths start very short, at catalog Gib Length (GL) dimensions.

2. Mounting hole patterns for shorter, custom lengths are available upon request by application.

- RMC 62** Minimum 29 mm (GL)
Maximum 610* mm
- RMC 100** Minimum 39 mm (GL)
Maximum 610* mm
- RMC 150** Minimum 51 mm (GL)
Maximum 915 mm
- RMC 200** Minimum 64 mm (GL)
Maximum 915 mm
- RMC 250** Minimum 77 mm (GL)
Maximum 915 mm
- RMC 300** Minimum 89 mm (GL)
Maximum 915 mm

3. PLEASE NOTE: Standard in stock lengths of READY-MET are cataloged on page 17. These ship fast and cost less. The Hard Metric Bender, pages 14 and 15, is available in custom lengths and can further reduce your tooling budget.

NOTE:

- Counterbored holes standard, tapped available as specials.

All dimensions are in millimeters, unless noted otherwise.

Model and	"X"	A	B	C	D	E	SHCS size	
RMC 62	5/8" dia.	lengths 152.5 - 305 mm	9.00	29.00	14.00	"X" / 8	"X" / 4	M4
RMC 100	1" dia.		12.00	37.50	21.50	"X" / 8	"X" / 4	M6
RMC 150	1 1/2" dia.		17.00	50.01	30.00	"X" / 6	"X" / 3	M8
RMC 62	5/8" dia.	lengths 317.5 - 610 mm	9.00	29.00	14.00	kn/12 "X" / 6	"X" / 6	M4
RMC 100	1" dia.		12.00	37.50	21.50	"X" / 12	"X" / 6	M6
RMC 150	1 1/2" dia.		17.00	50.00	30.00	"X" / 10	"X" / 5	M8
RMC 62*	5/8" dia.	(see * below) lengths 622.3 - 915 mm	9.00	29.00	14.00	"X" / 16	"X" / 8	M4
RMC 100*	1" dia.		12.00	37.50	21.50	"X" / 16	"X" / 8	M6
RMC 150	1 1/2" dia.		17.00	50.00	30.00	"X" / 14	"X" / 7	M8
RMC 200	2" dia.	lengths 203.2 - 305 mm	31.50	66.00	37.50			M10
RMC 250	2 1/2" dia.		35.00	79.00	44.00	"X" / 4	"X" / 2	M12
RMC 300	3" dia.		40.00	92.50	57.00			M2
RMC 200	2" dia.	lengths 317.5 - 610 mm	31.50	66.00	37.50			M10
RMC 250	2 1/2" dia.		35.00	78.99	44.00	"X" / 6	"X" / 3	M12
RMC 300	3" dia.		40.00	92.50	57.00			M12
RMC 200	2" dia.	lengths 203.2 - 915 mm	31.50	66.00	37.30			M10
RMC 250	2 1/2" dia.		35.00	79.00	44.00	"X" / 10	"X" / 5	M12
RMC 300	3" dia.		40.00	92.50	57.00			M2

* RMC 62 and RMC 100 lengths stop at 610 mm. Future lengths may be available 915 mm long. Call READY