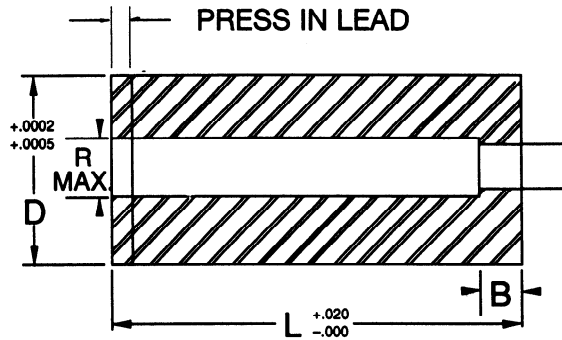




PIVOT PUNCH CORPORATION / BASIC SERIES
DIE BUTTONS HEADLESS/HEADED

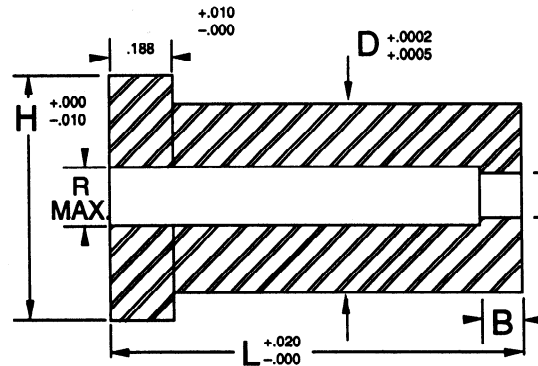
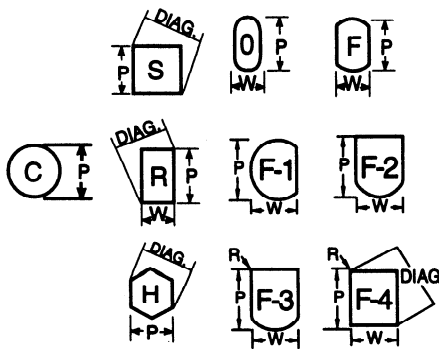
STEEL: A2, M2 R/C 60-62

- AD()
- HEADLESS A-2
- AH()
- HEADED A-2
- HD()
- HEADLESS M-2
- HH()
- HEADED M-2



ROUND	
TOL. #1	TOL. #2
+.0005 -.0000	+.0005 -.0005
T•I•R .0005	T•I•R .001

SHAPE	
TOL. #1	TOL. #2
±.0005	±.001
T•I•R .001	T•I•R .002



ROUND	
TOL. #1	TOL. #2
+.0005 -.0000	+.0005 -.0005
T•I•R .0005	T•I•R .001

SHAPE	
TOL. #1	TOL. #2
±.0005	±.001
T•I•R .001	T•I•R .002

UNIVERSAL CODE: 1041 & 1042 (SEE PAGE 175)

Shank		Round		Shape		Overall Length L								
D	Code	Min. B	Max. R	Range P	Min. W	Max. DIAG.	3/4	7/8	15/16**	1	1 1/8	1 1/4	1 3/8	1 1/2
.2500	2	.156	.156	.064-.135	-	-	X	X	X	X	X	X	X	
.3750	3	.156	.228	.064-.195	.048	.195	X	X	X	X	X	X	X	X
.5000	4	.156	.312	.064-.285	.064	.285	X	X	X	X	X	X	X	X
.6250	5	.187	.391	.136-.365	.095	.365	X	X	X	X	X	X	X	X
.7500	6	.187	.468	.136-.435	.118	.435	X	X	X	X	X	X	X	X
.8750	7	.187	.578	.276-.545	.127	.545	X	X	X	X	X	X	X	X
1.0000	8	.250	.703	.356-.675	.158	.675	X	X	X	X	X	X	X	X
1.2500	9	.250	.828	.500-.800	.189	.800	X	X	X	X	X	X	X	X
1.5000	10	.250	1.094	.616-1.050	.252	1.050	X	X	X	X	X	X	X	X

**HEADLESS ONLY

HOW TO ORDER

TYPE D L P
HDC 4 1.0 .187