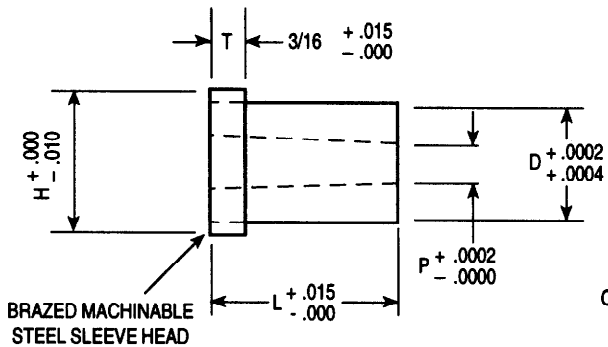




OBERG CARBIDE PUNCH & DIE / STANDARD TOLERANCE CARBIDE DIE INSERTS WITH FULL LENGTH TAPER AND MACHINABLE STEEL SLEEVE HEAD

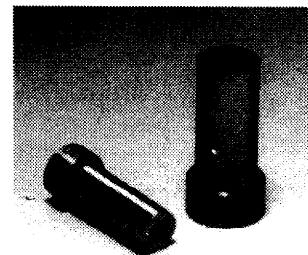


BRAZED MACHINABLE
STEEL SLEEVE HEAD

CONCENTRICITY O.D. AND I.D., .0002" T.I.R.
TAPER IN "P," .0025" PER INCH PER SIDE



CATALOG NUMBER	D BODY DIAMETER	P INSIDE DIAMETER	H HEAD DIAMETER	L = LENGTH	
				1	1 1/4
1DTS-H18	.1875	.030 - .0519	.296	•	•
2DTS-H18	.1875	.052 - .0749	.296	•	•
3DTS-H18	.1875	.075 - .0969	.296	•	•
1DTS-H25A	.250	.030 - .0519	.340	•	•
1DTS-H25	.250	.052 - .0749	.340	•	•
2DTS-H25	.250	.075 - .0969	.340	•	•
3DTS-H25	.250	.097 - .1199	.340	•	•
4DTS-H25	.250	.120 - .156	.340	•	•
1DTS-H31	.3125	.030 - .0519	.400	•	•
2DTS-H31	.3125	.052 - .0749	.400	•	•
3DTS-H31	.3125	.075 - .0969	.400	•	•
4DTS-H31	.3125	.097 - .1199	.400	•	•
5DTS-H31	.3125	.120 - .206	.400	•	•
1DTS-H37	.375	.030 - .0519	.460	•	•
2DTS-H37	.375	.052 - .0749	.460	•	•
3DTS-H37	.375	.075 - .0969	.460	•	•
4DTS-H37	.375	.097 - .1199	.460	•	•
5DTS-H37	.375	.120 - .206	.460	•	•



NOTE: ANY DIMENSION OTHER THAN THOSE SHOWN QUOTED ON REQUEST

WHEN ORDERING SPECIFY:

Quantity	Catalog Number	L	P
6	3DTS-H37	1 1/4"	.0960"

CATALOG NUMBER	D BODY DIAMETER	P INSIDE DIAMETER	H HEAD DIAMETER	L = LENGTH	
				1	1 1/4
1DTS-H43	.4375	.156 - .2009	.562	•	•
2DTS-H43	.4375	.201 - .248	.562	•	•
3DTS-H43	.4375	.2481 - .336	.562	•	•
1DTS-H50	.500	.156 - .2009	.625	•	•
2DTS-H50	.500	.201 - .248	.625	•	•
3DTS-H50	.500	.2481 - .336	.625	•	•
1DTS-H62	.625	.260 - .396	.750	•	•
1DTS-H75	.750	.3125 - .526	.875	•	•
1DTS-H87	.875	.375 - .590	1.000	•	•
1DTS-H100	1.000	.375 - .690	1.125	•	•



NOTE: ANY DIMENSION OTHER THAN THOSE SHOWN QUOTED ON REQUEST

WHEN ORDERING SPECIFY:

Quantity	Catalog Number	L	P
6	3DTS-H50	1 1/4"	.2960"

This catalog covers +.0002/+.0004" tolerance die components.
For +.00005/-.00000" tolerance die components, please refer to our precision catalog.