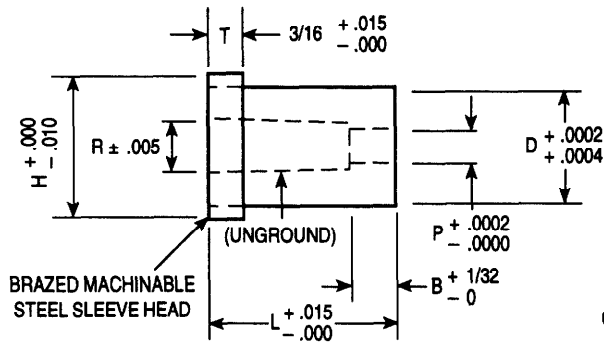




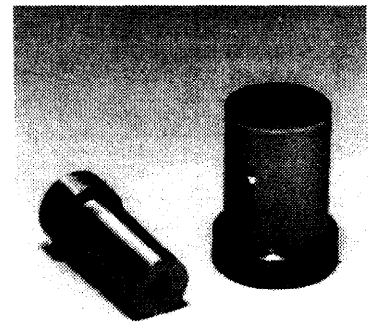
OBERG CARBIDE PUNCH & DIE / STANDARD TOLERANCE CARBIDE DIE INSERTS WITH COUNTERBORE AND MACHINABLE STEEL SLEEVE HEAD



ROUND

CONCENTRICITY O.D. AND I.D., .0002" T.I.R.
TAPER IN "P," .0025" PER INCH PER SIDE

CATALOG NUMBER	D BODY DIAMETER	P INSIDE DIAMETER	R RELIEF DIAMETER	B LAND	H HEAD DIAMETER	L = LENGTH	
						1	1 1/4
1DCS-H18A	.1875	.052 - .0619	.080	1/8"	.296	•	•
1DCS-H18B	.1875	.062 - .070	.090	1/8"	.296	•	•
2DCS-H18A	.1875	.0701 - .077	.100	1/8"	.296	•	•
2DCS-H18B	.1875	.0771 - .087	.108	3/16"	.296	•	•
3DCS-H18A	.1875	.0871 - .092	.114	3/16"	.296	•	•
1DCS-H25	.250	.052 - .0619	.080	1/8"	.340	•	•
1DCS-H25A	.250	.062 - .070	.090	1/8"	.340	•	•
1DCS-H25B	.250	.0701 - .077	.100	1/8"	.340	•	•
2DCS-H25A	.250	.0771 - .087	.108	3/16"	.340	•	•
2DCS-H25B	.250	.0871 - .092	.114	3/16"	.340	•	•
3DCS-H25A	.250	.0921 - .108	.125	3/16"	.340	•	•
3DCS-H25B	.250	.1081 - .124	.144	3/16"	.340	•	•
4DCS-H25	.250	.1241 - .140	.159	1/4"	.340	•	•
1DCS-H31A	.3125	.062 - .070	.090	1/8"	.400	•	•
1DCS-H31B	.3125	.0701 - .077	.100	1/8"	.400	•	•
2DCS-H31A	.3125	.0771 - .087	.108	3/16"	.400	•	•
2DCS-H31B	.3125	.0871 - .092	.114	3/16"	.400	•	•
3DCS-H31A	.3125	.0921 - .108	.125	3/16"	.400	•	•
3DCS-H31B	.3125	.1081 - .124	.144	3/16"	.400	•	•
4DCS-H31	.3125	.1241 - .140	.159	1/4"	.400	•	•
5DCS-H31	.3125	.1401 - .180	.209	1/4"	.400	•	•
6DCS-H31	.3125	.1801 - .195	.219	1/4"	.400	•	•
1DCS-H37A	.375	.062 - .070	.090	1/8"	.460	•	•
1DCS-H37B	.375	.0701 - .077	.100	1/8"	.460	•	•
2DCS-H37A	.375	.0771 - .087	.108	3/16"	.460	•	•
2DCS-H37B	.375	.0871 - .092	.114	3/16"	.460	•	•
3DCS-H37A	.375	.0921 - .108	.125	3/16"	.460	•	•
3DCS-H37B	.375	.1081 - .124	.144	3/16"	.460	•	•
4DCS-H37	.375	.1241 - .140	.159	1/4"	.460	•	•
5DCS-H37	.375	.1401 - .180	.209	1/4"	.460	•	•
6DCS-H37	.375	.1801 - .195	.219	1/4"	.460	•	•



NOTE: ANY DIMENSION OTHER THAN THOSE SHOWN QUOTED ON REQUEST

WHEN ORDERING SPECIFY:

Quantity	Catalog Number	L	P
6	3DCS-H31A	1"	.1000"

This catalog covers +.0002/+ .0004" tolerance die components.
For +.00005/- .00000" tolerance die components, please refer to our precision catalog.