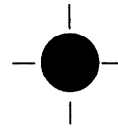
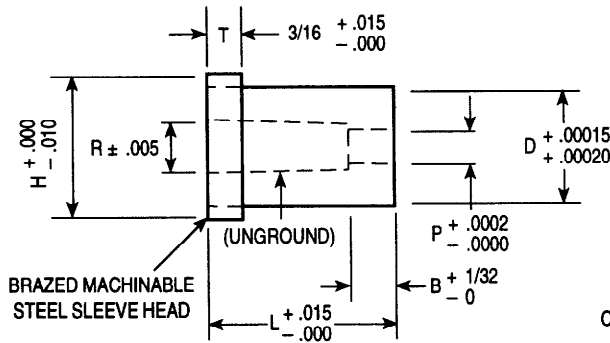




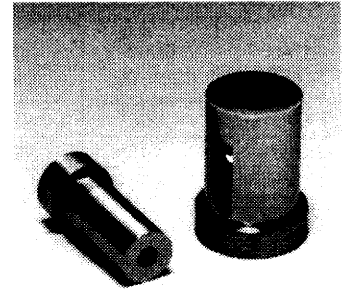
## OBERG CARBIDE PUNCH & DIE / PRECISION TOLERANCE CARBIDE DIE INSERTS WITH COUNTERBORE AND MACHINABLE STEEL SLEEVE HEAD



**ROUND**

CONCENTRICITY O.D. AND I.D., .0002" T.I.R.  
TAPER IN "P," .0025" PER INCH PER SIDE

| CATALOG NUMBER | D BODY DIAMETER | P INSIDE DIAMETER | R RELIEF DIAMETER | B LAND | H HEAD DIAMETER | L = LENGTH |       |
|----------------|-----------------|-------------------|-------------------|--------|-----------------|------------|-------|
|                |                 |                   |                   |        |                 | 1          | 1 1/4 |
| 1DCS-18A       | .1875           | .052 - .0619      | .080              | 1/8"   | .296            | •          | •     |
| 1DCS-18B       | .1875           | .062 - .070       | .090              | 1/8"   | .296            | •          | •     |
| 2DCS-18A       | .1875           | .0701 - .077      | .100              | 1/8"   | .296            | •          | •     |
| 2DCS-18B       | .1875           | .0771 - .087      | .108              | 3/16"  | .296            | •          | •     |
| 3DCS-18A       | .1875           | .0871 - .092      | .114              | 3/16"  | .296            | •          | •     |
| 1DCS-25        | .250            | .052 - .0619      | .080              | 1/8"   | .340            | •          | •     |
| 1DCS-25A       | .250            | .062 - .070       | .090              | 1/8"   | .340            | •          | •     |
| 1DCS-25B       | .250            | .0701 - .077      | .100              | 1/8"   | .340            | •          | •     |
| 2DCS-25A       | .250            | .0771 - .087      | .108              | 3/16"  | .340            | •          | •     |
| 2DCS-25B       | .250            | .0871 - .092      | .114              | 3/16"  | .340            | •          | •     |
| 3DCS-25A       | .250            | .0921 - .108      | .125              | 3/16"  | .340            | •          | •     |
| 3DCS-25B       | .250            | .1081 - .124      | .144              | 3/16"  | .340            | •          | •     |
| 4DCS-25        | .250            | .1241 - .140      | .159              | 1/4"   | .340            | •          | •     |
| 1DCS-31A       | .3125           | .062 - .070       | .090              | 1/8"   | .400            | •          | •     |
| 1DCS-31B       | .3125           | .0701 - .077      | .100              | 1/8"   | .400            | •          | •     |
| 2DCS-31A       | .3125           | .0771 - .087      | .108              | 3/16"  | .400            | •          | •     |
| 2DCS-31B       | .3125           | .0871 - .092      | .114              | 3/16"  | .400            | •          | •     |
| 3DCS-31A       | .3125           | .0921 - .108      | .125              | 3/16"  | .400            | •          | •     |
| 3DCS-31B       | .3125           | .1081 - .124      | .144              | 3/16"  | .400            | •          | •     |
| 4DCS-31        | .3125           | .1241 - .140      | .159              | 1/4"   | .400            | •          | •     |
| 5DCS-31        | .3125           | .1401 - .180      | .209              | 1/4"   | .400            | •          | •     |
| 6DCS-31        | .3125           | .1801 - .195      | .219              | 1/4"   | .400            | •          | •     |
| 1DCS-37A       | .375            | .062 - .070       | .090              | 1/8"   | .460            | •          | •     |
| 1DCS-37B       | .375            | .0701 - .077      | .100              | 1/8"   | .460            | •          | •     |
| 2DCS-37A       | .375            | .0771 - .087      | .108              | 3/16"  | .460            | •          | •     |
| 2DCS-37B       | .375            | .0871 - .092      | .114              | 3/16"  | .460            | •          | •     |
| 3DCS-37A       | .375            | .0921 - .108      | .125              | 3/16"  | .460            | •          | •     |
| 3DCS-37B       | .375            | .1081 - .124      | .144              | 3/16"  | .460            | •          | •     |
| 4DCS-37        | .375            | .1241 - .140      | .159              | 1/4"   | .460            | •          | •     |
| 5DCS-37        | .375            | .1401 - .180      | .209              | 1/4"   | .460            | •          | •     |
| 6DCS-37        | .375            | .1801 - .195      | .219              | 1/4"   | .460            | •          | •     |



NOTE: ANY DIMENSION OTHER THAN THOSE SHOWN QUOTED ON REQUEST

WHEN ORDERING SPECIFY:

| Quantity | Catalog Number | L  | P      |
|----------|----------------|----|--------|
| 6        | 3DCS-31A       | 1" | .1000" |