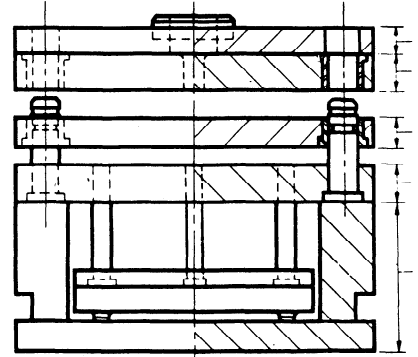




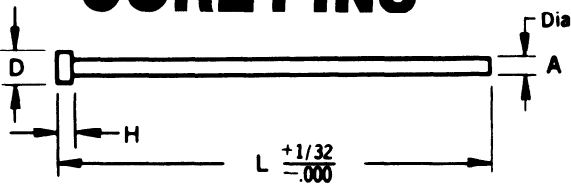
STANDARD

MOLD BASES

Request Complete Catalog



CORE PINS



Made from the finest air hardening Hot Work Die Steel, heat treated and precision ground after heat treating. Heads are forged and annealed to permit easier machining.

X—Indicates Lengths Available

Box Quantity	CATALOG NUMBER		A	D	H	LENGTH		
	Standard Hardness	High Hardness				L=3"	L=6"	L=10"
20	SC-6	SCX-6	3/32	1/4	1/8	X	X	X
	SC-7	SCX-7	7/64	1/4	1/8	X	X	X
	SC-8	SCX-8	1/8	1/4	1/8	X	X	X
	SC-9	SCX-9	9/64	1/4	1/8	X	X	X
	SC-10	SCX-10	5/32	9/32	5/32	X	X	X
	SC-11	SCX-11	11/64	11/32	3/16	X	X	X
	SC-12	SCX-12	3/16	3/8	3/16	X	X	X
	SC-13	SCX-13	13/64	3/8	3/16	X	X	X
	SC-14	SCX-14	7/32	13/32	3/16	X	X	X
	SC-16	SCX-16	1/4	7/16	3/16	X	X	X
10	SC-18	SCX-18	9/32	7/16	1/4	X	X	X
	SC-20	SCX-20	5/16	1/2	1/4	X	X	X
	SC-22	SCX-22	11/32	9/16	1/4	X	X	X
	SC-24	SCX-24	3/8	5/8	1/4	X	X	X
	SC-26	SCX-26	13/32	11/16	1/4	X	X	X
8	SC-28	SCX-28	7/16	11/16	1/4	X	X	X
	SC-30	SCX-30	15/32	3/4	1/4	X	X	X
	SC-32	SCX-32	1/2	3/4	1/4	X	X	X
	SC-36	SCX-36	9/16	13/16	1/4		X	X
5	SC-40	SCX-40	5/8	7/8	1/4		X	X
	SC-48	SCX-48	3/4	1"	1/4		X	X

CORE PIN

SPECIFICATIONS

**TWO HARDNESS RANGES
HOTWORK DIE STEEL**

STANDARD HARDNESS — SC Pins: 35-39 Rockwell C

HIGH HARDNESS — SCX Pins: 50-55 Rockwell C

RECOMMENDED HEAT-TREATMENT

(Air Hardening Hotwork Die Steel)

For Cooling in Air:
Heat to 1800° F and cool.

Tempering:
Heat to 900° — 1100° F.

For Maximum Tempering:
Heat to 980° F and hold for 2 hours.

NOTE: Avoid exposure to carburizing atmosphere or compounds.