



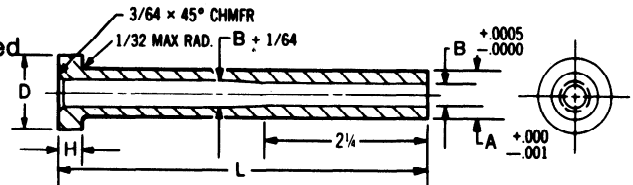
# STANDARD

## EJECTOR SLEEVES



### EJECTOR SLEEVES TAPERED LEAD-IN

Nitralloy Steel—Hot Forged Heads—Surface Hardened to 65-74RC ID is Gun Drilled & Honed with a hardness of 30-38RC.



CATALOG NUMBER	A O.D.	B I.D.	D HEAD DIA.	H HEAD THICK	L-4"	L-5"	L-6"	L-7"	L-8"	L-9"	L-10"
<b>ES-16</b>	1/4	5/32	7/16	3/16	X	X	X	X	X	X	
<b>ES-20</b>	5/16	3/16	1/2	1/4	X	X	X	X	X	X	
<b>ES-24</b>	3/8	1/4	5/8	1/4	X	X	X	X	X	X	X
<b>ES-28</b>	7/16	5/16	11/16	1/4		X	X	X	X	X	X
<b>ES-32</b>	1/2	3/8	3/4	1/4		X	X	X	X	X	X
<b>ES-40</b>	5/8	7/16	7/8	1/4			X	X	X	X	X
<b>ES-44</b>	11/16	1/2	15/16	1/4			X	X	X	X	X

### TOLERANCES

H Dimension	+ .000"
	- .002"
D Dimension	+ .000"
	- .010"
L Dimension	+ 1/32"
	- .000"

**X—Indicates Lengths Available**

Ejector Sleeves Are Packed 4 Per Box

## STANDARD CORE PIN CONVERSION CHART

Dia.	STD. HARDNESS			HIGH HARDNESS			Dia.	STD. HARDNESS			HIGH HARDNESS		
	Standard	DME	National	Standard	DME	National		Standard	DME	National	Standard	DME	National
3/32	<b>SC-6</b>	C-7	CS093	<b>SCX-6</b>	CX-7	CH093	5/16	<b>SC-20</b>	C-21	CS312	<b>SCX-20</b>	CX-21	CH312
7/64	<b>SC-7</b>	C-8	CS109	<b>SCX-7</b>	CX-8	CH109	11/32	<b>SC-22</b>	C-23	CS343	<b>SCX-22</b>	CX-23	CH343
1/8	<b>SC-8</b>	C-9	CS125	<b>SCX-8</b>	CX-9	CH125	3/8	<b>SC-24</b>	C-25	CS375	<b>SCX-24</b>	CX-25	CH375
9/64	<b>SC-9</b>	C-10	CS140	<b>SCX-9</b>	CX-10	CH140	13/32	<b>SC-26</b>	C-27	CS406	<b>SCX-26</b>	CX-27	CH406
5/32	<b>SC-10</b>	C-11	CS156	<b>SCX-10</b>	CX-11	CH156	7/16	<b>SC-28</b>	C-29	CS437	<b>SCX-28</b>	CX-29	CH437
11/64	<b>SC-11</b>	C-12	CS171	<b>SCX-11</b>	CX-12	CH171	15/32	<b>SC-30</b>	C-31	CS468	<b>SCX-30</b>	CX-31	CH468
3/16	<b>SC-12</b>	C-13	CS187	<b>SCX-12</b>	CX-13	CH187	1/2	<b>SC-32</b>	C-33	CS500	<b>SCX-32</b>	CX-33	CH500
13/64	<b>SC-13</b>	C-14	CS203	<b>SCX-13</b>	CX-14	CH203	9/16	<b>SC-36</b>	C-35	CS562	<b>SCX-36</b>	CX-35	CH562
7/32	<b>SC-14</b>	C-15	CS218	<b>SCX-14</b>	CX-15	CH218	5/8	<b>SC-40</b>	C-37	CS675	<b>SCX-40</b>	CX-37	CH625
1/4	<b>SC-16</b>	C-17	CS250	<b>SCX-16</b>	CX-17	CH250	3/4	<b>SC-48</b>	C-41	CS750	<b>SCX-48</b>	CX-41	CH750
9/32	<b>SC-18</b>	C-19	CS281	<b>SCX-18</b>	CX-19	CH281							