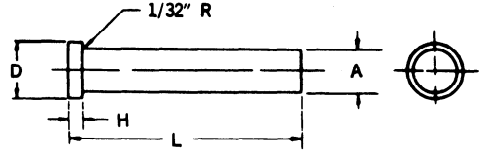
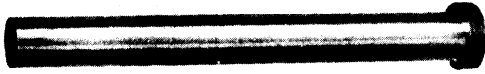




STANDARD

RETURN PINS

Nitralloy Steel—Hot Forged Head Hardened and Ground



5/8 SERIES—"A" DIM. = .625 ^{+.000"} _{-.001"}									
L	4 1/16	4 1/8	5 1/16	5 1/8	6 1/16	6 1/8	7 1/16	7 1/8	8 1/16
D	7/8	7/8	7/8	7/8	7/8	7/8	7/8	7/8	7/8
H	1/4	1/4	1/4	1/4	1/4	1/4	1/4	1/4	1/4
CAT. NO.	R6241	R6249	R6251	R6259	R6261	R6269	R6271	R6279	R6281

TOLERANCES
For Sprue Puller & Return Pins

A Dimension ^{+.000"}_{-.001"}

D Dimension ^{+.000"}_{-.010"}

H Dimension ^{+.000"}_{-.002"}

L Dimension ^{+1/16"}_{-.000"}

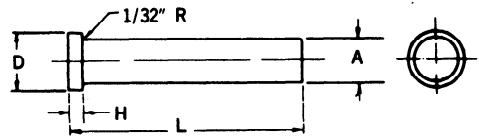
3/4 SERIES—"A" DIM. = .750 ^{+.000"} _{-.001"}										
L	4 13/16	5 1/8	5 13/16	6 1/8	6 13/16	7 1/8	7 13/16	8 1/8	8 13/16	9 1/8
D	1"	1"	1"	1"	1"	1"	1"	1"	1"	1"
H	1/4	1/4	1/4	1/4	1/4	1/4	1/4	1/4	1/4	1/4
CAT. NO.	R75415	R7557	R75515	R7567	R75615	R7577	R75715	R7587	R75815	R7597

Return Pins Packed 4 Per Box

SPRUE PULLER PINS



Nitralloy Steel—
Hot Forged Head Hardened and Ground



3/8 SERIES—"A" DIM. = .375 ^{+.000"} _{-.001"}												
L	3 3/8	4 3/8	4 7/8	5 3/8	5 7/8	6 3/8	6 7/8	7 3/8	7 7/8	8 3/8	8 7/8	9 3/8
D	3/8	3/8	3/8	3/8	3/8	3/8	3/8	3/8	3/8	3/8	3/8	3/8
H	1/4	1/4	1/4	1/4	1/4	1/4	1/4	1/4	1/4	1/4	1/4	1/4
CAT. NO.	S3737	S3743	S3747	S3753	S3757	S3763	S3767	S3773	S3777	S3783	S3787	S3783

Sprue Puller Pins Packed in Bulk.