



STANDARD

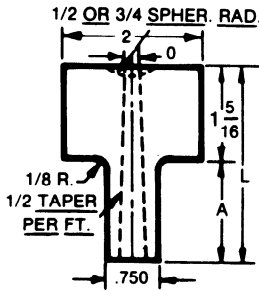
SPRUE BUSHINGS

Material: SAE 6145 steel-hardened, ground, and polished.

ORDERING INFORMATION:

All Sprue Bushings are stocked with "O" dim. as shown below.
7/32", 9/32" "O" is standard priced in all series.
1 1/32" "O" is standard priced in "A" & "B" series.
1 1/32" "O" is specially priced in "U", "UR", "UV", "L", "LN" & "AR" series.
5/32" "O" is specially priced in all series.
Specials can be priced and made as requested.

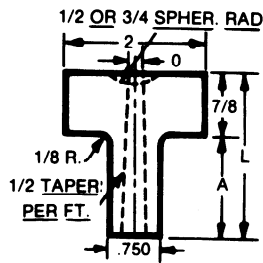
"UV" SERIES VAN DORN AND MOSLO



Available with: "O"—5/32, 7/32, 9/32
"R"—1/2 or 3/4

CATALOG NUMBER	A	L
UV-71	29/32	27/32
UV-87	1 13/32	2 23/32
UV-103	1 29/32	3 7/32
UV-119	2 13/32	3 23/32
UV-135	2 29/32	4 7/32

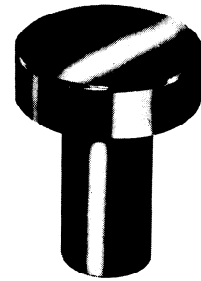
"U" SERIES NEWBURY AND STANDARD



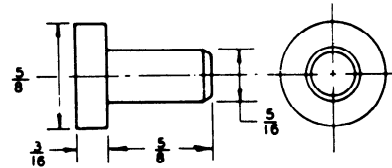
Available with: "O"—5/32, 7/32, 9/32

CATALOG NUMBER	A	L
U-57	29/32	1 25/32
U-73	1 13/32	2 9/32
U-89	1 29/32	2 25/32
U-105	2 13/32	3 9/32
U-121	2 29/32	4 7/32

STOP PINS



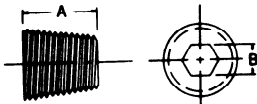
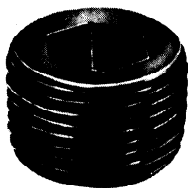
Head thickness has .020 grinding stock.
Packed 20 per box.



EXTRA LONG CAP SCREWS

Thread length is twice the diameter plus 1/2"

BRASS SOCKET PRESSURE PLUGS

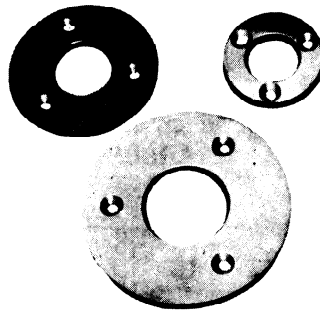


HIGH PRESSURE FLUSH—SEAL

3/4" taper per foot (Use standard 3/4" TPF tapped hole)

CATALOG NUMBER	NOMINAL SIZE	LENGTH A	HEX SIZE B	THDS. PER INCH	TAP DRILL
BP-12	1/8	.250	3/16	27	21/64
BP-25	1/4	.406	1/4	18	27/64
BP-37	3/8	.406	5/16	18	9/16
BP-50	1/2	.531	3/8	14	11/16

STOP RINGS



CAT. NO.	O.D.	I.D.	Thick.
2-SR	2	1 1/16	3/16
3-SR	3	1 1/4	3/16
4-SR	4	1 5/8	3/16

Can be used in place of many stop pins or to give extra support in areas of high pressure & wear.
.020 Grinding Stock



SIZE-LENGTH
1/2-13 x 7 1/2"
1/2-13 x 8 1/2"
1/2-13 x 9"
1/2-13 x 9 1/2"
1/2-13 x 10"
1/2-13 x 11"
1/2-13 x 12"
3/4-11 x 7 1/2"
3/4-11 x 8 1/2"
3/4-11 x 9"
3/4-11 x 9 1/2"
3/4-11 x 10"
3/4-11 x 11"
3/4-11 x 12"
3/4-10 x 8 1/2"
3/4-10 x 9"
3/4-10 x 9 1/2"
3/4-10 x 10"
3/4-10 x 10 1/2"
3/4-10 x 11"
3/4-10 x 12"
3/4-10 x 14"