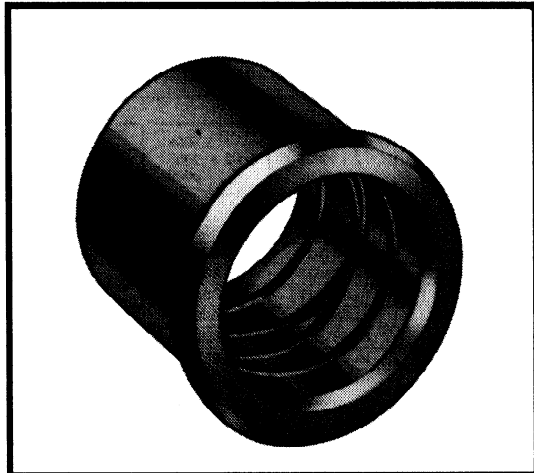
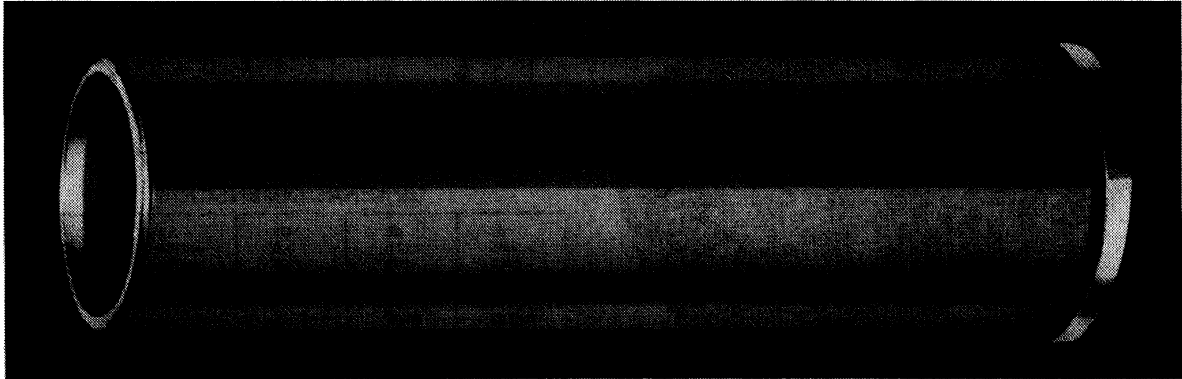




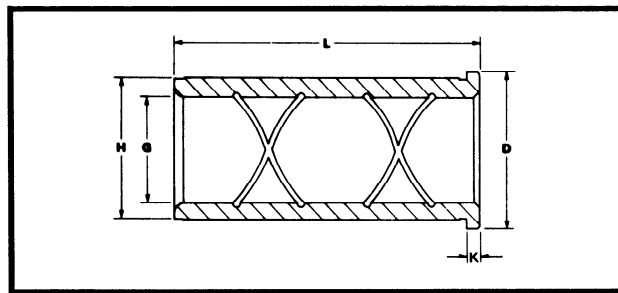
# Bronze Plated Mold SHOULDER BUSHINGS



Precision-ground steel with exclusive Lamina-Bronze plating. These are the only bushings that give you oil grooves and a true bushing surface that extends the full length of the bushing.

Lamina-Bronze bushings will operate smoother and longer than plain steel bushings ever could. Whatever lubricant is used, it is distributed throughout the bearing surface by the figure-8 oil groove system. The bronze surface will not gall.

### GENERAL DIMENSIONS



G +.0005 -.0000	H +.0005 -.0000	D +.0 -1/32	K
.7505	1.1255	1.302	3/16
.8755	1.2505	1.427	3/16
1.0005	1.3755	1.552	3/16
1.2505	1.6255	1.802	3/16
1.5005	2.0005	2.177	3/16
2.0005	2.5005	2.677	3/16
2.5005	3.2505	3.427	3/16
3.0005	3.7505	3.990	1/2

L LENGTH	G (INSIDE DIAMETER)								
	.7505 3/4 + .0005 -.0000	.8755 7/8 + .0005 -.0000	1.0005 1 + .0005 -.0000	1.2505 1-1/4 + .0005 -.0000	1.5005 1-1/2 + .0005 -.0000	2.0005 2 + .0005 -.0000	2.5005 2-1/2 + .0005 -.0000	3.0005 3 + .0005 -.0000	
7/8	LBB-06-07	LBB-07-07	LBB-08-07	LBB-10-07	LBB-12-07				
1-3/8	LBB-06-13	LBB-07-13	LBB-08-13	LBB-10-13	LBB-12-13	LBB-16-13	LBB-20-13		
1-7/8	LBB-06-17	LBB-07-17	LBB-08-17	LBB-10-17	LBB-12-17	LBB-16-17	LBB-20-17		
2-3/8	LBB-06-23	LBB-07-23	LBB-08-23	LBB-10-23	LBB-12-23	LBB-16-23	LBB-20-23		
2-7/8	LBB-06-27	LBB-07-27	LBB-08-27	LBB-10-27	LBB-12-27	LBB-16-27	LBB-20-27		
3-3/8	LBB-06-33	LBB-07-33	LBB-08-33	LBB-10-33	LBB-12-33	LBB-16-33	LBB-20-33		
3-7/8	LBB-06-37	LBB-07-37	LBB-08-37	LBB-10-37	LBB-12-37	LBB-16-37	LBB-20-37	LBB-24-37	
4-3/8	LBB-06-43	LBB-07-43	LBB-08-43	LBB-10-43	LBB-12-43	LBB-16-43	LBB-20-43		
4-7/8	LBB-06-47	LBB-07-47	LBB-08-47	LBB-10-47	LBB-12-47	LBB-16-47	LBB-20-47	LBB-24-47	
5-7/8	LBB-06-57	LBB-07-57	LBB-08-57	LBB-10-57	LBB-12-57	LBB-16-57	LBB-20-57	LBB-24-57	
7-7/8									LBB-24-77