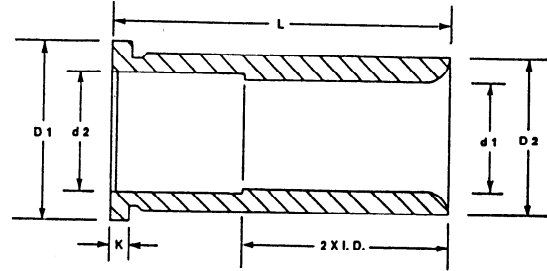




HARDENED STEEL MOLD BUSHINGS

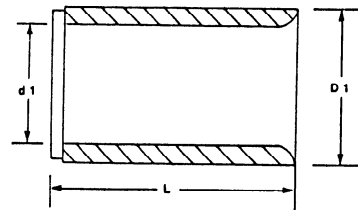
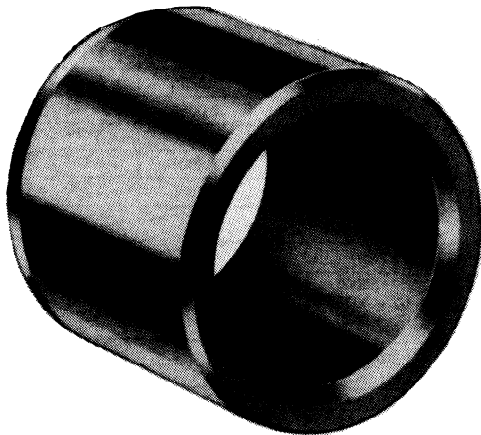


GENERAL DIMENSIONS

d1 +.0005 -.0000	d2 +.015 -.000	D1 +.0 -.1/32	D2 +.0005 -.0000	K +.005 -.005
0.7505	0.780	1.302	1.1255	.187
0.8755	0.905	1.427	1.2505	.187
1.0005	1.031	1.552	1.3755	.187
1.2505	1.280	1.802	1.6255	.187
1.5005	1.531	2.177	2.0005	.187
2.0005	2.031	2.677	2.5005	.187
2.5005	2.531	3.427	3.2505	.187
3.0005	3.031	3.990	3.7505	.187

L LENGTH	INSIDE DIAMETER							
	.7505 3/4 + .0005 -.0000	0.8755 7/8 + .0005 -.0000	1.0005 1 + .0005 -.0000	1.2505 1-1/4 + .0005 -.0000	1.5005 1-1/2 + .0005 -.0000	2.0005 2 + .0005 -.0000	2.5005 2-1/2 + .0005 -.0000	3.0005 3 + .0005 -.0000
7/8	HLBB0607	HLBB0707	HLBB0807	HLBB1007	HLBB1207			
1-3/8	HLBB0613	HLBB0713	HLBB0813	HLBB1013	HLBB1213	HLBB1613	HLBB2013	
1-7/8	HLBB0617	HLBB0717	HLBB0817	HLBB1017	HLBB1217	HLBB1617	HLBB2017	
2-3/8	HLBB0623	HLBB0723	HLBB0823	HLBB1023	HLBB1223	HLBB1623	HLBB2023	
2-7/8	HLBB0627	HLBB0727	HLBB0827	HLBB1027	HLBB1227	HLBB1627	HLBB2027	
3-3/8	HLBB0633	HLBB0733	HLBB0833	HLBB1033	HLBB1233	HLBB1633	HLBB2033	
3-7/8	HLBB0637	HLBB0737	HLBB0837	HLBB1037	HLBB1237	HLBB1637	HLBB2037	HLBB2437
4-3/8	HLBB0643	HLBB0743	HLBB0843	HLBB1043	HLBB1243	HLBB1643	HLBB2043	
4-7/8	HLBB0647	HLBB0747	HLBB0847	HLBB1047	HLBB1247	HLBB1647	HLBB2047	HLBB2447
5-7/8	HLBB0657	HLBB0757	HLBB0857	HLBB1057	HLBB1257	HLBB1657	HLBB2057	HLBB2457
7-7/8								HLBB2477

STRAIGHT BUSHING HARDENED STEEL



PART NUMBER	d1 ID +.0005 -.000	D1 OD	L LENGTH
HSTB0607	0.7505	1.1255	27/32
HSTB0613	0.7505	1.1255	1-11/32
HSTB0713	0.8755	1.2505	1-11/32
HSTB0813	1.0005	1.3755	1-11/32
HSTB1013	1.2505	1.6255	1-3/8
HSTB1017	1.2505	1.6255	1-7/8
HSTB1213	1.5005	2.0005	1-3/8
HSTB1217	1.5005	2.0005	1-7/8
HSTB1637	2.0005	2.5005	3-7/8
HSTB2047	2.5005	3.2505	4-7/8