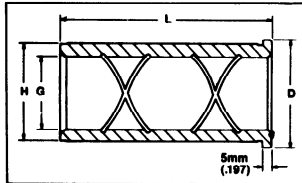
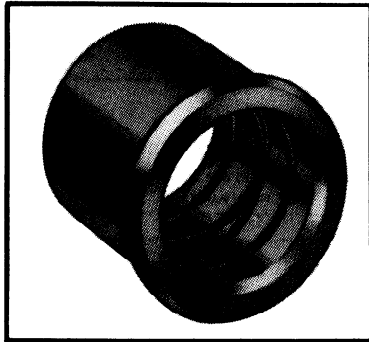




**Lamina<sup>INC</sup> Bronze Plated Mold**  
**SHOULDER BUSHINGS** *Metric*



**GENERAL DIMENSIONS**  
(See Notes Below)

G	H	D
20mm (.7874)	26mm (1.0236)	28mm (1.102)
25mm (.9843)	32mm (1.2598)	35mm (1.378)
30mm (1.1811)	38mm (1.4961)	41mm (1.614)
40mm (1.5748)	50mm (1.9685)	53mm (2.086)
50mm (1.9685)	60mm (2.3622)	63mm (2.480)
60mm (2.3622)	70mm (2.7559)	73mm (2.874)

Hole Diameters are  $+.025\text{mm} (+.001)$

O.D. of Bushings are  $+.025\text{mm} (+.001)$

Lamina-Bronze bushings will operate smoother and longer than plain steel bushings ever could. Whatever lubricant is used, it is distributed throughout the bearing surface by the figure-8 oil groove system. These are the only bushings that give you oil grooves and a true bushing surface that extends the full length of the bushing.

L Length	G (INSIDE DIAMETER)					
	20mm (.7874)	25mm (.9843)	30mm (1.1811)	40mm (1.5748)	50mm (1.9685)	60mm (2.3622)
25mm (.984)	LBBM-20-X-25	LBBM-25-X-25	LBBM-30-X-25	LBBM-40-X-25		
30mm (1.181)	LBBM-20-X-30	LBBM-25-X-30	LBBM-30-X-30	LBBM-40-X-30	LBBM-50-X-30	LBBM-60-X-30
40mm (1.575)	LBBM-20-X-40	LBBM-25-X-40	LBBM-30-X-40	LBBM-40-X-40	LBBM-50-X-40	LBBM-60-X-40
50mm (1.968)	LBBM-20-X-50	LBBM-25-X-50	LBBM-30-X-50	LBBM-40-X-50	LBBM-50-X-50	LBBM-60-X-50
65mm (2.560)	LBBM-20-X-65	LBBM-25-X-65	LBBM-30-X-65	LBBM-40-X-65	LBBM-50-X-65	LBBM-60-X-65
80mm (3.150)	LBBM-20-X-80	LBBM-25-X-80	LBBM-30-X-80	LBBM-40-X-80	LBBM-50-X-80	LBBM-60-X-80
100mm (3.937)	LBBM-20-X-100	LBBM-25-X-100	LBBM-30-X-100	LBBM-40-X-100	LBBM-50-X-100	LBBM-60-X-100
120mm (4.724)	LBBM-20-X-120	LBBM-25-X-120	LBBM-30-X-120	LBBM-40-X-120	LBBM-50-X-120	LBBM-60-X-120
140mm (5.512)		LBBM-25-X-140	LBBM-30-X-140	LBBM-40-X-140	LBBM-50-X-140	LBBM-60-X-140
150mm (5.905)		LBBM-25-X-150	LBBM-30-X-150	LBBM-40-X-150	LBBM-50-X-150	LBBM-60-X-150

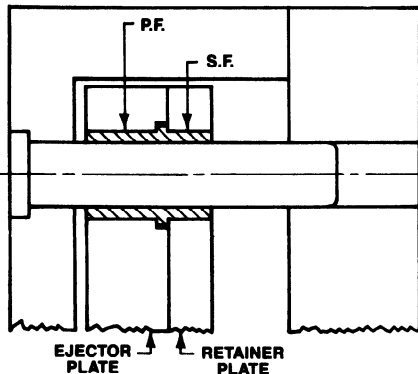
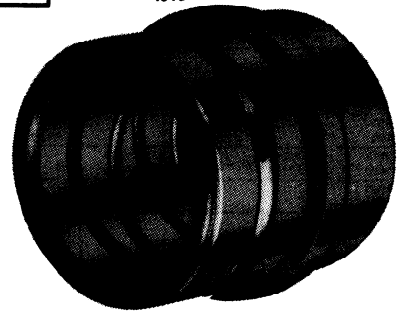
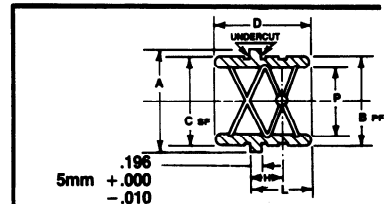


**METRIC EJECTOR BUSHINGS (Bronze Plated)**

( ) INDICATES "INCH" DIMENSION

**GENERAL DIMENSIONS**

CAT. NO.	P $+.013\text{mm}$ (.0005) $-.000$	B $+.013\text{mm}$ (.0005) $-.000$	D $+.000$ $-.8\text{mm}$ (.031)	A $+.000$ $-.13\text{mm}$ (.005)	C $+.000$ $-.026\text{mm}$ (.001)	L $+.000$ $-.4\text{mm}$ (.015)	H
EJM-20	20mm (.7899)	26mm (1.0241)	37mm (1.456)	28mm (1.102)	26mm (1.0226)	25mm (.983)	15mm (.59)
EJM-25	25mm (.9867)	32mm (1.2603)	45mm (1.771)	35mm (1.378)	32mm (1.2588)	29mm (1.140)	16mm (.63)
EJM-30	30mm (1.1836)	38mm (1.4965)	45mm (1.771)	41mm (1.614)	38mm (1.495)	29mm (1.140)	16mm (.63)



**OFFERS QUICK  
EASY INSTALLATION  
ELIMINATES DOWELS**

Lubrication Ring  
P.F. Dia. Grd. to Size  
Opp. End Grd. For Ejector Plate Removal  
Lubrication Hole  
Lamina Bronze Plated I.D.  
Radii to Serve as Lead  
I.D. Oversize to Accommodate Expansion