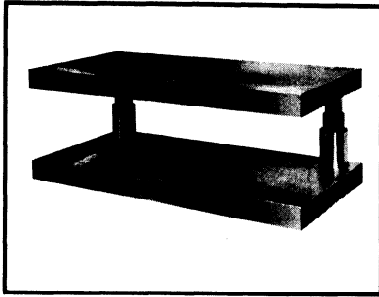
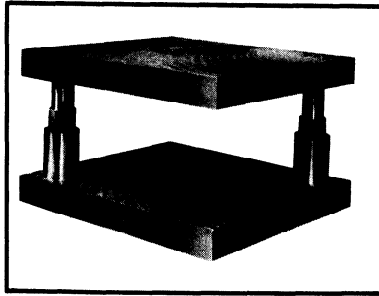
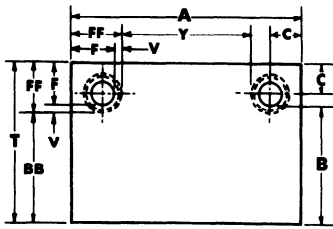


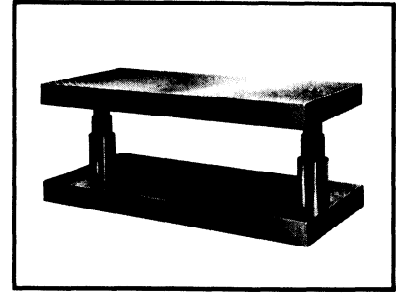
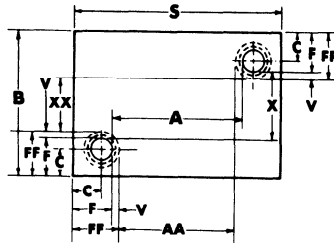
**STANDARD DIE SUPPLY, INC.**  
**NON-ROTATING BALL CAGE**  
**TWO-POST BALL BEARING SPECIAL DIE SETS**



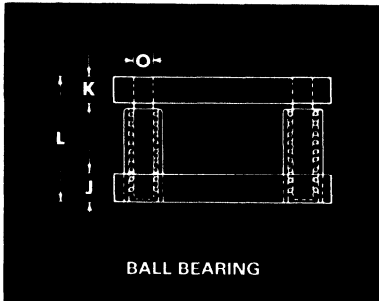
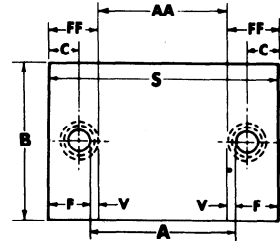
Back Post—Type "BB-BP"



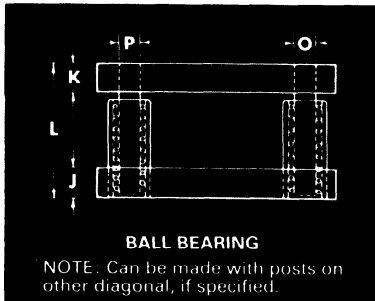
Diagonal Post—Type "BB-DP"



Center Post—Type "BB-CP"

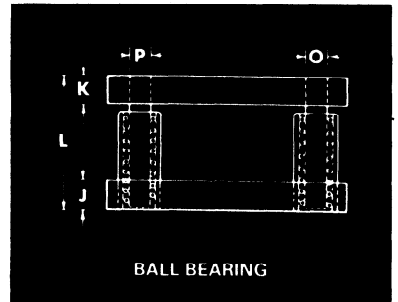


BALL BEARING



BALL BEARING

NOTE: Can be made with posts on other diagonal, if specified.



BALL BEARING

<b>TWO-POST DIE SETS</b> DIMENSIONS FURNISHED WHEN CUSTOMER SPECIFIES ONLY A AND B DIMENSIONS.				
A L. to R. (As Spec.)	O Post Dia.	P Post Dia.	J D. H. Thk.	K P. H. Thk.
6" to 10"	1¼	1	1½	1½
11" to 16"	1½	1¼	1½	1½
17" to 22"	1¾	1½	1¾	1¾
23" to 28"	2	1¾	2	2
29" to 40"	2	1¾	2½	2½
41" to 65"	2½	2	3	3
66" to 100"	3	2½	3½	3½

Nominal Guide Post Dimension	Sleeve Bushing			
	C	F	V	FF
1	1½	2	¾	2¾
1¼	1¾	2¾	½	2¾
1½	2	2¾	½	3¼
1¾	2½	3	½	3½
2	2¾	3¾	¾	4
2½	2¾	3¾	¾	4½
3	3	4½	¾	5½

<b>FORMULAS</b>	
AA = A - 2V	S = A + 2F
BB = B - V	T = B + F
Y = A - 2FF	X = B - 2F
XX = B - 2FF	

When ordering ALL STEEL SPECIAL BALL BEARING die sets, specify:

1. Type "BP", "DP", "CP", or "FP" ball bearing die set.
2. Dimensions "A", "B", "J" and "K".
3. Ball bearing die sets will be furnished with press fit steel sleeve bushings.
4. Specify length "L", which is minimum shut height.
5. Post diameter "O" & "P".