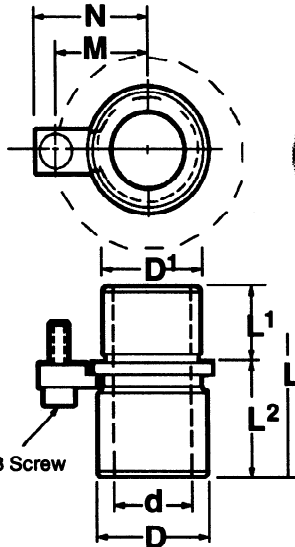




CLAMP TYPE SHOULDER BUSHINGS - DEMOUNTABLE

ABD- unground*

ABG- finished ground



Demountable shoulder bushings offer all the advantages of straight sleeve bushings and combine them with the convenience of easy assembly and disassembly.

These clamp type bushings are meant to be wring fit into the die shoe and should never be forced or inserted by hammering.

Toe clamps and socket head screws are provided to hold the bushings in place.

ABD unground demountable bushings are available with .015 grind stock on the "D" dimension. Specify when ordering.

* When ordering unground Demountable Ball Bearing Bushings please use the prefix ABD.

Nom Post Diam	Inside Dia d	D'	D	L'	L ²	M	N	L	Catalog Number	Nom Post Dia	Inside Dia d	D'	D	L'	L ²	M	N	L	Catalog Number
1	1.3768	1.716	1.920	1-1/8	7/8	1-7/32	1-19/32 2 Clamps	2	AB G0808	1-3/4	2.1265	2.746	2.920	1-3/8	2-7/8	1-23/32	2-3/32 4 Clamps	4-1/4	AB G1417
					1-1/8			AB G0809	3-1/8						4-1/2			AB G1418	
					1-3/8			AB G0810	3-3/8						4-3/4			AB G1419	
					1-5/8			AB G0811	3-5/8						5			AB G1420	
					1-7/8			AB G0812	3-7/8						5-1/4			AB G1421	
					2-1/8			AB G0813	4-1/8						5-1/2			AB G1422	
					2-3/8			AB G0814	4-5/8						6			AB G1424	
					2-5/8			AB G0815	5-1/8						6-1/2			AB G1426	
									5-5/8						7			AB G1428	
									6-1/8						7-1/2			AB G1430	
1-1/4	1.6265	2.106	2.280	1-1/8	1-3/8	1-13/32	1-25/32 3 Clamps	2-1/2	AB G1010	2	2.5015	3.161	3.500	1-3/8	1-5/8	2	2-3/8 4 Clamps	3	AB G1612
					1-5/8			AB G1011	2-1/8						3-1/2			AB G1614	
					1-7/8			AB G1012	2-3/8						3-3/4			AB G1615	
					2-1/8			AB G1013	2-5/8						4			AB G1616	
					2-3/8			AB G1014	2-7/8						4-1/4			AB G1617	
					2-5/8			AB G1015	3-1/8						4-1/2			AB G1618	
					2-7/8			AB G1016	3-3/8						4-3/4			AB G1619	
					3-1/8			AB G1017	3-7/8						5			AB G1620	
					3-3/8			AB G1018	3-7/8						5-1/4			AB G1621	
					3-7/8			AB G1020	4-1/8						5-1/2			AB G1622	
4-3/8	AB G1022	4-5/8	6	AB G1624															
4-7/8	AB G1024	4-1/8	6-1/2	AB G1626															
		5-1/8	7	AB G1628															
		5-5/8	7-1/2	AB G1630															
1-1/2	1.8765	2.436	2.600	1-3/8	1-5/8	1-9/16	1-15/16 3 Clamps	3	AB G1212	2-1/2	3.0015	3.681	4.000	1-3/8	3-5/8	2-1/4	2-5/8 4 Clamps	5	AB G2020
					1-7/8			AB G1213	4-1/8						5-1/2			AB G2022	
					2-1/8			AB G1214	4-5/8						6			AB G2024	
					2-3/8			AB G1215	5-1/8						6-1/2			AB G2026	
					2-5/8			AB G1216	5-5/8						7			AB G2028	
					2-7/8			AB G1217	5-1/8						7-1/2			AB G2030	
					3-1/8			AB G1218	3-5/8						5			AB G2420	
					3-3/8			AB G1219	4-1/8						5-1/2			AB G2422	
					3-5/8			AB G1220	4-5/8						6			AB G2424	
					3-7/8			AB G1221	4-7/8						6-1/2			AB G2426	
4-1/8	AB G1222	5-1/8	7	AB G2428															
4-5/8	AB G1224	5-5/8	7-1/2	AB G2430															
1-3/4	2.1265	2.746	2.920	1-3/8	1-5/8	1-23/32	2-3/32 4 Clamps	3	AB G1412	3	3.5015	4.181	4.500	1-3/8	3-5/8	2-1/2	2-7/8 4 Clamps	5	AB G2420
					2-1/8			AB G1414	4-1/8						5-1/2			AB G2422	
					2-3/8			AB G1415	4-5/8						6			AB G2424	
					2-5/8			AB G1416	5-1/8						6-1/2			AB G2426	
									5-5/8						7			AB G2428	
		6-1/8	7-1/2	AB G2430															