



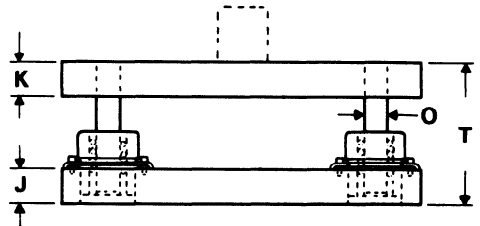
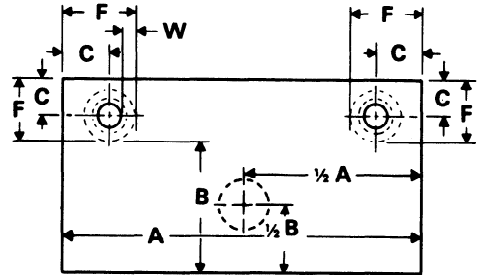
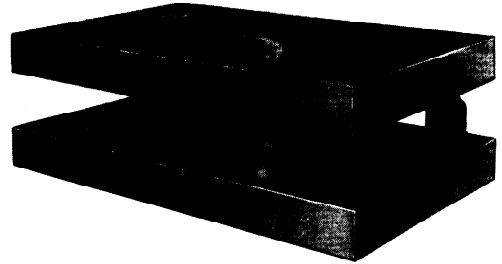
STANDARD

BALL BEARING

*Large Two Post
All-Steel Die Sets*

BACK POST SERIES BP-33BB

ROTATING BALL CAGE



See Demountable Shoulder Bushing Clamp Arrangement Selection Data on Page 16.

| MINIMUM THICKNESS RECOMMENDED | K | 1 | 1 1/4 | | | | | 1 1/2 | | | | |
|-------------------------------|-----|-------|-------|----|----|----|-----|-------|-----|-----|-----|-----|
| | J | 1 1/4 | 1 1/2 | | | | | 1 3/4 | | | | |
| POST DIAMETER | O | 1 | 1 1/4 | | | | | 1 1/2 | | | | |
| DIE SPACE | A → | 8 | 10 | 12 | 14 | 16 | 18 | 20 | 22 | 24 | 26 | 28 |
| B ↓ | 6 | 18 | 24 | 28 | 33 | 37 | 43 | 48 | 53 | 58 | 63 | 67 |
| | 8 | 23 | 29 | 35 | 41 | 48 | 54 | 59 | 65 | 71 | 77 | 85 |
| | 10 | | 35 | 43 | 50 | 57 | 64 | 71 | 79 | 87 | 94 | 101 |
| | 12 | | | 49 | 58 | 66 | 75 | 84 | 92 | 100 | 109 | 117 |
| | 14 | | | | 66 | 76 | 85 | 95 | 104 | 116 | 125 | 135 |
| | 16 | | | | | 85 | 96 | 108 | 118 | 129 | 140 | 151 |
| | 18 | | | | | | 107 | 119 | 131 | 143 | 155 | 167 |
| | 20 | | | | | | | 130 | 143 | 156 | 169 | 182 |
| | 22 | | | | | | | | 155 | 170 | 184 | 198 |
| | 24 | | | | | | | | | 189 | 204 | 220 |
| | 26 | | | | | | | | | | 219 | 236 |
| | 28 | | | | | | | | | | | 252 |
| | 30 | | | | | | | | | | | |
| 32 | | | | | | | | | | | | |
| 34 | | | | | | | | | | | | |
| 36 | | | | | | | | | | | | |
| 40 | | | | | | | | | | | | |

NOTE: DIE SPACE SIZES ARE GROUPED WITHIN GREEN LINES WHICH INDICATE SUGGESTED GUIDE POST DIAMETERS. GREEN NUMBERS INDICATE THE WEIGHT OF A SINGLE PLATE 1" THICK.