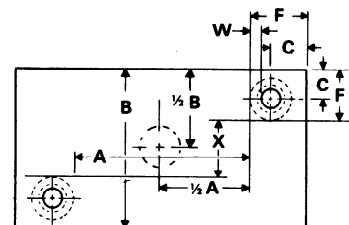
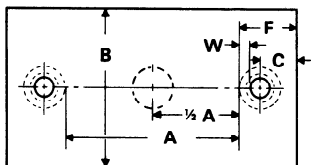
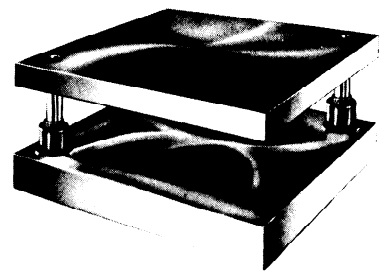


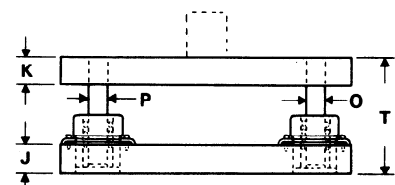
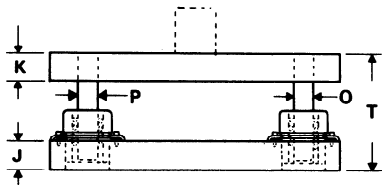
STANDARD

BALL BEARING



*Two Post
All-Steel
Die Sets*

ROTATING BALL CAGE



CENTER POST, SERIES CP-34BB

DIAGONAL POST, SERIES DP-35BB

MINIMUM THICKNESS RECOMMENDED	K	1 1/4						1 1/2				1 3/4	
	J	1 1/2						1 3/4				2	
POST DIAMETER	P	1						1 1/4				1 1/2	
	O	1 1/4						1 1/2				1 3/4	
DIE SPACE	A →	6	8	10	12	14	16	18	20	22	24	26	28
B ↓	6	18	21	25	28	31	36	39	42	46	49	54	57
	8	24	28	33	37	42	48	52	57	61	67	71	76
	10	30	35	41	48	54	59	67	72	78	84	89	95
	12		42	51	58	65	81	80	87	93	100	109	116
	14			59	67	77	85	93	101	111	119	127	135
	16			68	79	88	97	107	118	127	136	145	154
	18				89	99	110	122	133	143	153	163	173
	20					110	125	136	147	159	170	181	193
	22						137	150	162	175	187	199	212
	24						150	163	177	190	204	228	241
	26								192	217	232	247	261
	28								206	234	250	266	282
	30									251	268	285	302
	32										286	304	322
	34											323	342
	36												362
40													
45													
50													
55													
60													

NOTE: DIE SPACE SIZES ARE GROUPED WITHIN GREEN LINES WHICH INDICATE SUGGESTED GUIDE POST DIAMETERS. GREEN NUMBERS INDICATE THE WEIGHT OF A SINGLE PLATE 1" THICK.