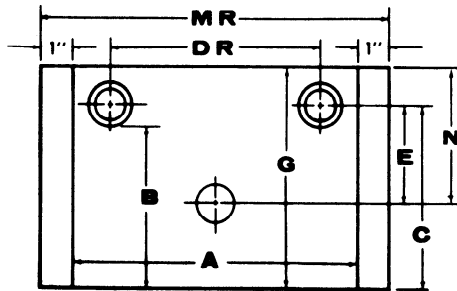
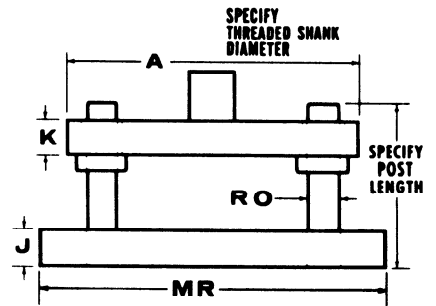
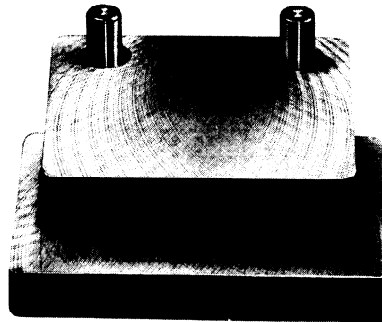




ALL STEEL RECTANGULAR CATALOG DIE SETS



TYPE R DIE SET



TYPE R DIE SET

DIE SPACE		THICKNESS		R Set No.	C	DR	E	G	MR	N	RO
L. to R. A	F. to B. B	Die Hldr. J	Punch Hldr. K								
11 1/4	8	1 1/4	1 1/2	R118-11	9	7 3/4	5	10 1/2	13 1/4	6 1/2	1 1/4
			1 3/4	R118-12							
			2 1/4	R118-13							
		2 1/2	1 1/2	R118-21							
			1 3/4	R118-22							
			2 1/4	R118-23							
		3 1/4	1 1/2	R118-31							
			1 3/4	R118-32							
			2 1/4	R118-33							
11 1/2	9	1 1/4	1 1/2	R119-11	10	7 3/4	5 1/2	11 1/2	13 1/2	7	1 1/4
			1 3/4	R119-12							
			2 1/4	R119-13							
		2 1/2	1 1/2	R119-21							
			1 3/4	R119-22							
			2 1/4	R119-23							
		3 1/4	1 1/2	R119-31							
			1 3/4	R119-32							
			2 1/4	R119-33							
12 1/2	10	1 1/4	1 1/2	R1210-11	11 1/8	9 9/8	6 1/8	12 3/4	14 1/2	7 3/4	1 1/2
			2 1/4	R1210-12							
		2 1/2	1 3/4	R1210-21							
			2 1/4	R1210-22							
		3 1/4	1 3/4	R1210-31							
			2 1/4	R1210-32							
12 1/2	12	1 1/4	1 3/4	R1212-11	13 1/8	9 9/8	7 1/8	14 3/4	14 1/2	8 3/4	1 1/2
			2 1/4	R1212-12							
		2 1/2	1 3/4	R1212-21							
			2 1/4	R1212-22							
		3 1/4	1 3/4	R1212-31							
			2 1/4	R1212-32							
12 1/2	16	2	1 3/4	R1216-11	17 1/8	9 9/8	9 9/8	18 3/4	14 1/2	10 3/4	1 1/2
			2 1/4	R1216-12							
		2 1/2	1 3/4	R1216-21							
			2 1/4	R1216-22							

PLEASE SPECIFY WHEN ORDERING

1. Catalog number and quantity desired.
2. Type or Catalog number of bushings desired. Unless otherwise requested, all "R" sets are supplied with regular precision toe clamp type shoulder bushings. Extra charges will be made for other than regular shoulder bushings.
3. The length of the guide pin. Only precision pins are used in the Standard "R" type die sets.
4. Size of threaded shank required.
5. No shank if none required.
6. Manner of shipment.

All Steel Precision Rectangular Die Sets are available with Ball Bearing Components as a SPECIAL ORDER.

Call For Price & Delivery!