



## Danly Style Demountable Bushings

Demountable Bushings are manufactured of hardened steel and prefitted to precision guide posts. Prefitting is consistently accurate so that bushings and guide posts of the same diameter are interchangeable.

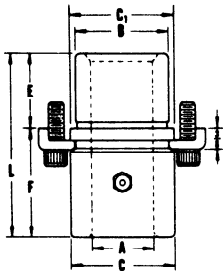
Demountable Bushings seat flush with the ground face of the punch holder with a tap fit. They are assembled in the punch holder with easily mounted clamps that serve to maintain perfect alignment of the bushings, with the bore perpendicular to the ground surface of the punch holder. The use of clamps and screws give Demountable Bushings four times the holding power of pressed-in bushings. Yet, they are easily removed for die work or repair.

Bronze-Plated Demountable Bushings offer superior resistance to seizure, the major cause of bushing wear. They are recommended for use on applications with high surface speed operations and where there are unusual side thrust loads.

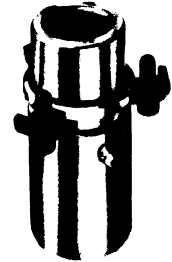
All Bushings are equipped with Figure 8 oil grooves and lubrication fittings. Each is inspected by the most modern methods to assure uniform hardness, quality and accuracy to dimension. The size range in diameter and length of Demountable Bushings is complete for all recommended use. Other diameters and lengths, or other types, can be furnished on special order.

**NOTE: These bushings should not be pressed in or honed.**

### EXTRA LONG SHOULDER—Steel or Bronze Plated

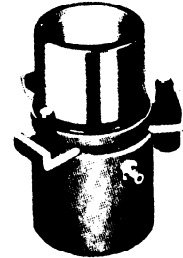


Inside Dia. A		B	C	C <sub>1</sub>	E	F	L	Steel Cat. No.	X-Long Bronze Plated
Nom.	Dec.								
1	1.000	1½	1.720	1.845	1⅝	3	3⅜	6-08-56	6-08-28
1¼	1.250	1¾	1.940	2.095	1⅞	3	4⅞	6-10-56	6-10-28
1½	1.500	2	2.190	2.345	1⅞	3	4⅞	6-12-56	6-12-28
1¾	1.750	2¼	2.503	2.658	1⅞	3	4⅞	6-14-56	6-14-28
2	2.000	2½	2.909	3.064	1⅞	3	4⅞	6-16-56	6-16-28
2½	2.500	3¼	3.659	3.814	1⅞	3	4⅞	6-20-56	6-20-28
3	3.000	3¾	4.190	4.283	1⅞	3	4⅞	6-24-56	6-24-28

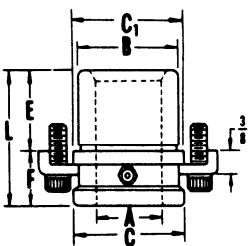


### SHOULDER—Steel, Bronze or Bronze Plated

Inside Dia. A		B	C	C <sub>1</sub>	E	F	L	Steel Cat. No.	Bronze Catalog Number	Bronze Plated Catalog Number
Nom.	Dec.									
¾	.750	1⅞	1.175	1.300	1⅝	1¾	2⅞	6-06-64		
⅞	.875	1⅞	1.422	1.547	1⅝	1¾	2⅞	6-07-64		
1	1.000	1½	1.720	1.845	1⅝	1¾	2⅞	6-08-64	6-08-48	6-08-24
1¼	1.250	1¾	1.940	2.095	1⅞	2	3⅞	6-10-64	6-10-48	6-10-24
1½	1.500	2	2.190	2.345	1⅞	2	3⅞	6-12-64	6-12-48	6-12-24
1¾	1.750	2¼	2.503	2.658	1⅞	2	3⅞	6-14-64	6-14-48	6-14-24
2	2.000	2½	2.909	3.064	1⅞	2	3⅞	6-16-64	6-16-48	6-16-24
2½	2.500	3¼	3.659	3.814	1⅞	2½	4⅞	6-20-64	6-20-48	6-20-24
3	3.000	3¾	4.190	4.283	1⅞	2½	4⅞	6-24-64	6-24-48	6-24-24



### SHORT SHOULDER—Steel or Bronze Plated



Inside Dia. A		B	C	C <sub>1</sub>	E	F	L	Steel Cat. No.	Bronze Plated Catalog Number
Nom.	Dec.								
¾	.750	1⅞	1.175	1.300	1⅝	¾	1⅞	6-06-63	
⅞	.875	1⅞	1.422	1.547	1⅝	¾	1⅞	6-07-63	
1	1.000	1½	1.720	1.845	1⅝	1¾	1⅞	6-08-63	6-08-23
1¼	1.250	1¾	1.940	2.095	1⅞	1¾	1⅞	6-10-63	6-10-23
1½	1.500	2	2.190	2.345	1⅞	1¾	2	6-12-63	6-12-23
1¾	1.750	2¼	2.503	2.658	1⅞	1	2⅞	6-14-63	6-14-23
2	2.000	2½	2.909	3.064	1⅞	1	2⅞	6-16-63	6-16-23
2½	2.500	3¼	3.659	3.814	1⅞	1	2⅞	6-20-63	6-20-23
3	3.000	3¾	4.190	4.283	1⅞	1	2⅞	6-24-63	6-24-23



### I.D. TOLERANCES FOR PREFITTED DEMOUNTABLE BUSHINGS

Nom. I.D.	Precision
1	+ .0002 to + .0007
1¼	+ .0003 to + .0008
1½	+ .0004 to + .0009
1¾	+ .0005 to + .0010
2	+ .0005 to + .0013
2½	+ .0006 to + .0014
3	+ .0008 to + .0016