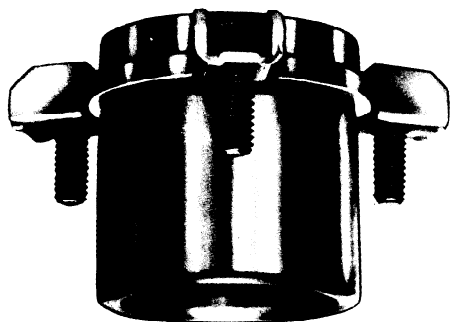




Danly Style Low Profile Demountable Bushings

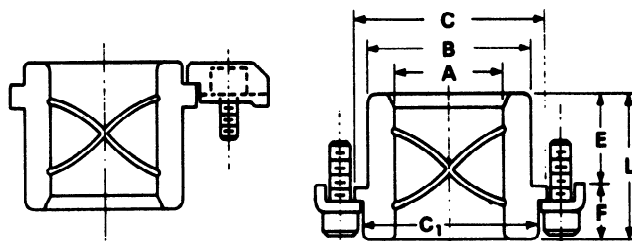


Nom.	Inside Dia. A		B	C	C ₁	E	F	L	Catalog Bronze Plated
	Dec.								
1	1.000	1½	1.845	1.593	7/8	½	1 3/8	6-0807-27	
								1 1/8	6-0811-27
								1 3/8	6-0819-27
1¼	1.250	1¾	2.095	1.843	7/8	½	1 3/8	6-1007-27	
								1 1/8	6-1015-27
								2 7/8	6-1023-27
1½	1.500	2	2.345	2.062	1 1/8	½	2 3/8	6-1215-27	
								2 7/8	6-1223-27
1¾	1.750	2¼	2.658	2.312	2 3/8	½	2 7/8	6-1419-27	
								3 3/8	6-1427-27
2	2.000	2½	3.064	2.625	2 3/8	½	2 7/8	6-1619-27	
								3 3/8	6-1627-27
2½	2.500	3	3.814	3.062	2 3/8	½	3 3/8	6-2021-27	
								3 3/8	6-2029-27
								4 5/8	6-2037-27

BRONZE PLATED

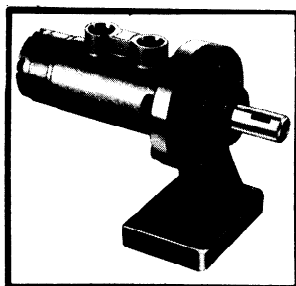
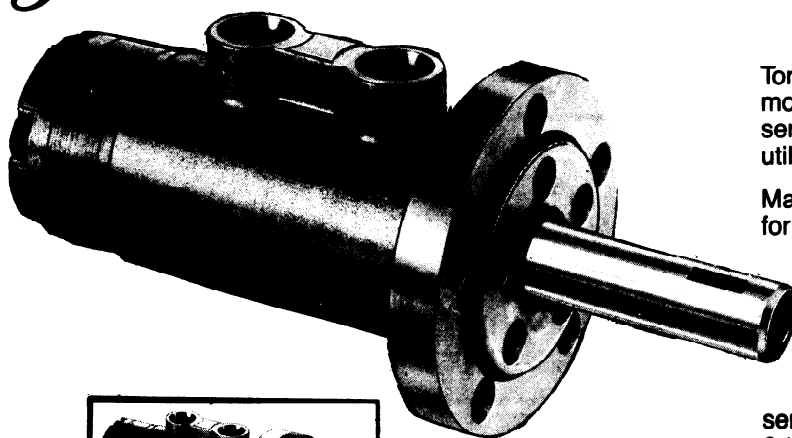
Low profile bushings are designed to offer ease of die grinding by minimizing the need for removing bushings. Since the main body of the bushing is within the punch holder, only a minimum of the bushing projects below the punch holder into the die area. It thus provides ample clearance for die grinding and is well suited for presses with automatic transfer devices requiring a minimum of bushing projection.

The low profile bushings are available with two different clamps. Bushings with an inside diameter of less than 1½" have the standard clamp with screw head projecting below the clamp (Clamp No. 6-95-1). Bushings with inside diameter of 1½" and larger have toe clamps which incorporate the head of the screw within the body of the clamp (Clamp No. 6-98-1).



DANLY is a registered trademark of DANLY DIE SET
A division of Connell Limited Partnership

Lamina HYDRAULIC MOTORS



Torque equal to that of much larger ordinary motors, smooth rotation, and extended service life by virtue of the unique design utilizing only three moving parts

Main shaft readily adaptable to hold tools for rotary machining, drilling, tapping, etc.

Designed to stop, start and reverse instantly to fully utilize the advantages of rotary hydraulics

5 sizes, unusually small in size, are ideal for many applications, including servo-mechanisms, and provide torque from 0 to 526 in./lbs.-RPM, 0 to 2272

For complete specifications, write or call for the Lamina Hydraulic Motor Catalog