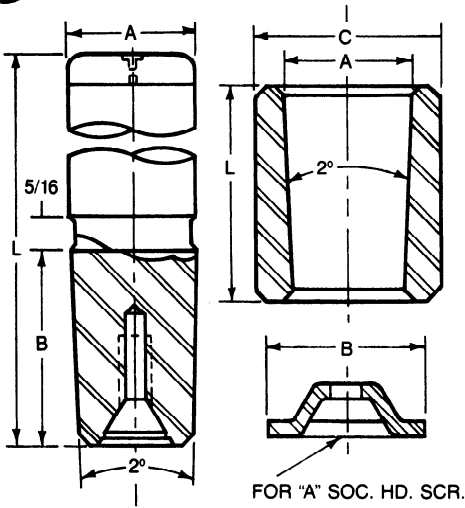




Lamina

GUIDE PINS Removable Type

(PIN ASSEMBLY INCLUDES: BUSHING LINER, END CAP & SCREW).

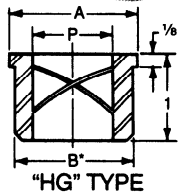
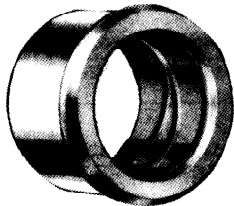


* .015 stock left on this diameter for grinding to fit bored hole in die shoe.

A NOM. DIA.	B	PART NO.	"L" LENGTHS													
			5	5-1/2	6	6-1/2	7	7-1/2	8	8-1/2	9	10	11	12	13	14
1	1-1/2	RP-100	5	5-1/2	6	6-1/2	7	7-1/2	8	8-1/2	9					
1-1/4	1-3/4	RP-125	5-1/2	6	6-1/2	7	7-1/2	8	8-1/2	9	10	11	12	13	14	
1-1/2	2	RP-150	5-1/2	6	6-1/2	7	7-1/2	8	8-1/2	9	10	11	12	13	14	
1-3/4	2-1/4	RP-175	6	6-1/2	7	7-1/2	8	8-1/2	9	10	11	12	13	14		
2	2-1/2	RP-200	6	6-1/2	7	7-1/2	8	8-1/2	9	10	11	12	13	14		
2-1/2	3-1/2	RP-250	7-1/2	8	8-1/2	9	10	11	12	13	14					

BUSHING LINER				END CAP			
A NOM. DIA.	C*	L	PART NO.	PIN SIZE	A	B	PART NO.
1	1-1/2	1-5/8	NRB-100	1	5/16	1-1/4	RC-100
1-1/4	1-3/4	1-7/8	NRB-125	1-1/4	3/8	1-1/2	RC-125
1-1/2	2	2-1/8	NRB-150	1-1/2	3/8	1-3/4	RC-150
1-3/4	2-1/4	2-3/8	NRB-175	1-3/4	3/8	2	RC-175
2	2-1/2	2-5/8	NRB-200	2	3/8	2-1/4	RC-200
2-1/2	3	3-5/8	NRB-250	2-1/2	1/2	2-3/4	RC-250

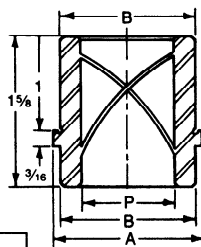
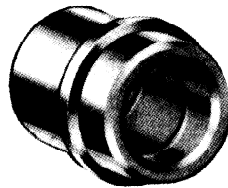
STRIPPER GUIDE PINS & BUSHINGS



"HG" TYPE
BRONZER PLATED STRIPPER
GUIDE PIN BUSHING

P NOM. PIN DIA.	A	B*	PART. NO.
5/8	1 1/8	1	HG-82
5/8	1 1/8	1	HG-82L
3/4	1 1/4	1 1/8	HG-75
1	1 1/2	1 3/8	HG-100

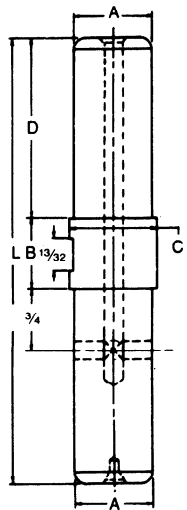
P NOM. PIN DIA.	A	B*	PART. NO.
3/4	1 1/16	1 1/8	CG-75
1	1 1/16	1 3/8	CG-100



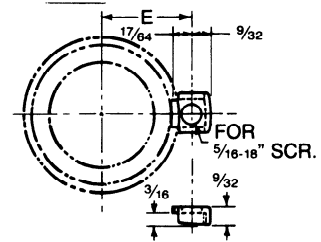
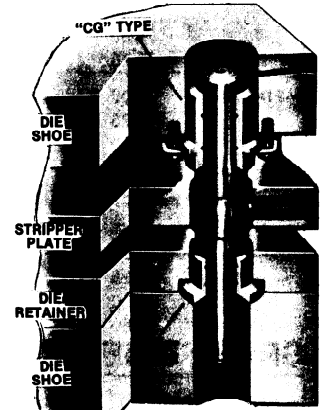
"CG" TYPE

CLAMP

E	NO. OF "D" CLAMPS
5/16	2
3/16	3



* When ordering please specify:
Not Ground—+.010 to +.020 Over Nominal
Ground Nominal—.000 +.001



All bushings must be wring-fit in the die shoe. Please order by part number.

A NOM. DIA.	B	C*	D	PART NO.	"L" LENGTH	
5/8	3/4	5/8	2 1/4	SGP-62	4	5
3/4	7/8	3/4	2 1/4	SGP-75	5	—
3/4	7/8	3/4	2 3/4	SGP-75	6 1/2	—
1	1	1	2 3/4	SGP-100	6 1/2	7 1/2

* When ordering please specify:
Not Ground—+.010 to +.020 Over Nominal
Ground Nominal—.000 +.0003