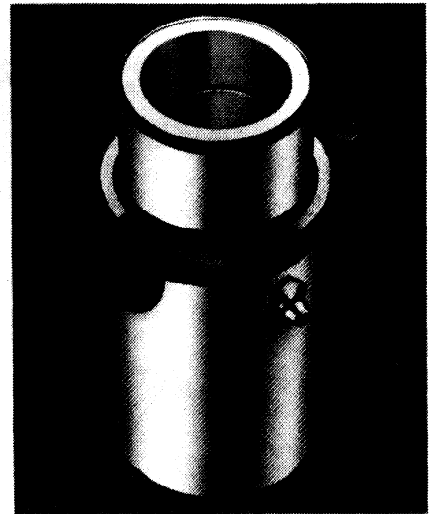




METRIC

Bronze Plated Guide Bushings



With Standard, Long and Extra-Long Shoulders

*.397 (.015) Stock Left On This Diameter For Grinding

Bushing can also be finished ground at additional cost.

Please specify grind.

LDSS=Nominal $\begin{matrix} +.000 \\ -.010 \end{matrix}$ $\begin{pmatrix} +.000 \\ -.0004 \end{pmatrix}$

| P | A | A-1 | B* | C | E | No. Of 'D' CLAMPS |
|------------|-------------|-------------|-------------|-------------|--------------|-------------------|
| 19 (.748) | 34 (1.339) | 31 (1.220) | 28 (1.102) | 29 (1.142) | 22.5 (.886) | 2 |
| 25 (.984) | 44 (1.732) | 41 (1.614) | 38 (1.496) | 39 (1.535) | 27.5 (1.083) | 3 |
| 32 (1.260) | 53 (2.087) | 50 (1.969) | 45 (1.771) | 48 (1.890) | 32.0 (1.260) | 3 |
| 40 (1.575) | 63 (2.480) | 60 (2.362) | 54 (2.126) | 58 (2.283) | 37.0 (1.457) | 3 |
| 50 (1.969) | 79 (3.110) | 76 (2.992) | 65 (2.559) | 74 (2.913) | 45.0 (1.772) | 4 |
| 63 (2.480) | 92 (3.622) | 89 (3.504) | 81 (3.189) | 87 (3.425) | 51.5 (2.028) | 4 |
| 80 (3.150) | 111 (4.370) | 108 (4.252) | 100 (3.937) | 106 (4.173) | 61.0 (2.402) | 4 |

BUSHINGS WITH ASSEMBLIES INCLUDE BUSHING, CLAMPS & SCREWS (ORDER BY PART NUMBER)

| P NOM. PIN DIA. | D OVERALL LENGTH | H SHOULDER LENGTH | L WRING-FIT LENGTH | PART. NO. |
|--------------------------|------------------------|-------------------------|--------------------------|--------------|
| 19 (.748) | 50 (1.969) | 32 (1.260) | 18 (.709) | AC-19-S |
| | 70 (2.756) | 52 (2.047) | 18 (.709) | LAC-19-S |
| | 70 (2.756) | 43 (1.693) | 27 (1.063) | LAM-19-F |
| 25 (.984) | 55 (2.165) | 32 (1.260) | 23 (.906) | AC-25-S |
| | 80 (3.150) | 57 (2.244) | 23 (.906) | LAC-25-S |
| | 80 (3.150) | 48 (1.890) | 32 (1.260) | LAM-25-F |
| 32 (1.260) | 60 (2.362) | 34 (1.339) | 26 (1.024) | AC-32-S |
| | 90 (3.543) | 64 (2.520) | 26 (1.024) | LAC-32-S |
| | 90 (3.543) | 53 (2.087) | 37 (1.063) | LAM-32-F |
| 40 (1.575) | 67 (2.638) | 37 (1.457) | 30 (1.181) | AC-40-S |
| | 100 (3.937) | 70 (2.756) | 30 (1.181) | LAC-40-S |
| | 100 (3.937) | 63 (2.087) | 47 (1.850) | LAM-40-F |
| 50 (1.969) | 75 (2.953) | 40 (1.575) | 35 (1.378) | AC-50-S |
| | 110 (4.331) | 75 (2.953) | 35 (1.378) | LAC-50-S |
| | 110 (4.331) | 53 (2.087) | 57 (2.244) | LAM-50-F |
| 63 (2.480) | 90 (3.543) | 42 (1.654) | 48 (1.890) | AC-63-S |
| | 130 (5.118) | 82 (3.228) | 48 (1.890) | LAC-63-S |
| | 130 (5.118) | 63 (2.480) | 67 (2.638) | LAM-63-F |
| 80 (3.150) | 100 (3.937) | 52 (2.047) | 48 (1.890) | AC-80-S |
| | 150 (5.906) | 102 (4.016) | 48 (1.890) | LAC-80-S |
| | 150 (5.906) | 73 (2.874) | 77 (3.031) | LAM-80-F |

Bushings must be wring-fitted and clamped into die shoe.

