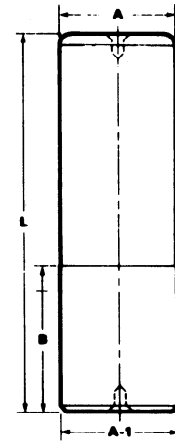




# METRIC GUIDE PINS

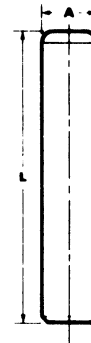


STYLE TPB

# Straight Type

Of hardened steel, with a precision-ground running diameter (A), these metric guide pins are perfect mates for Lamina bronze-plated metric guide bushings

PLEASE ORDER BY PART NUMBER AND LENGTH



STYLE TN

**STYLE TN PINS**

19 (.748) to 32 (1.2598) mm IN DIAMETER. NO CENTERS. NO GRIND STOCK.

\* ( ) Indicates "Inch" dimensions.

A NOM. PIN DIA.	PART NO.	LENGTH (L)														
		(4.724)	(5.118)	(5.512)	(5.906)	(6.299)	(6.693)	(7.087)	(7.480)	(7.874)	(8.267)	(8.661)	(9.049)	(10.238)	(11.024)	(11.811)
19 (.748)	TN-19	120	130	140	150	160	170	180	190	200						
25 (.984)	TN-25	120	130	140	150	160	170	180	190	200	220	240	260	280		
32 (1.26)	TN-32		130	140	150	160	170	180	190	200	220	240	260	280	300	

**STYLE TPB PINS**

40 (1.5748) to 80 (3.1496) mm IN DIAMETER. WITH CENTERS. WITH .397 (.015) GRIND STOCK ON A-1 DIAMETER.

A NOM. PIN DIA.	B	PART NO.	LENGTH (L)																		
			(5.118)	(5.512)	(5.906)	(6.299)	(6.693)	(7.087)	(7.480)	(7.874)	(8.267)	(8.661)	(9.049)	(10.238)	(11.024)	(11.811)	(12.598)	(14.173)	(15.748)	(17.323)	(19.686)
40 (1.575)	50 (1.969)	TPB-40	130	140	150	160	170	180	190	200	220	240	260	280	300	320	360				
50 (1.969)	60 (2.362)	TPB-50			150	160	170	180	190	200	220	240	260	280	300	320	360				
63 (2.480)	80 (3.150)	TPB-63								200	220	240	260	280	300	320	360	400	440		
80 (3.150)	100 (3.937)	TPB-80											280	300	320	360	400	440	500		