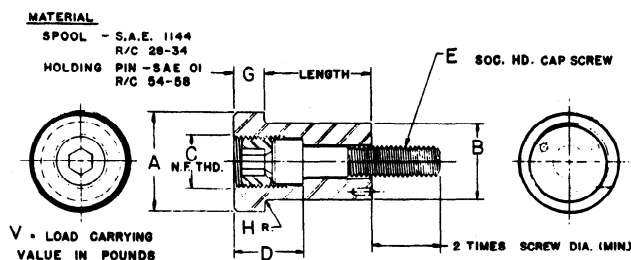




MATIS

SPOOL TYPE DIE PAD RETAINERS



A = 1.06	A = 1.25	A = 1.62	A = 1.87	A = 2.00	A = 2.75
B = .81	B = 1.00	B = 1.25	B = 1.50	B = 1.62	B = 2.25
C = 5/8 - 18	C = 3/4 - 16	C = 7/8 - 14	C = 1-1/8 - 12	C = 1-1/4 - 12	C = 1-3/4 - 12
D = 1.00	D = 1.12	D = 1.12	D = 1.25	D = 1.38	D = 1.62
E = 5/16 - 18	E = 3/8 - 16	E = 1/2 - 13	E = 5/8 - 11	E = 3/4 - 10	E = 1 - 8
G = .38	G = .50	G = .50	G = .50	G = .50	G = .50
H = .03	H = .03	H = .06	H = .06	H = .06	H = .06
V = 900	V = 1,400	V = 2,600	V = 4,000	V = 5,800	V = 10,000

LENGTH	CAT. NO.	CAT. NO.	CAT. NO.	CAT. NO.	CAT. NO.	CAT. NO.
1.00	106-100	125-100	162-100	187-100		
1.25	106-125	125-125	162-125	187-125	200-125	
1.50	106-150	125-150	162-150	187-150	200-150	275-150
1.75	106-175	125-175	162-175	187-175	200-175	275-175
2.00	106-200	125-200	162-200	187-200	200-200	275-200
2.25	106-225	125-225	162-225	187-225	200-225	275-225
2.50	106-250	125-250	162-250	187-250	200-250	275-250
2.75	106-275	125-275	162-275	187-275	200-275	275-275
3.00	106-300	125-300	162-300	187-300	200-300	275-300
3.25	106-325	125-325	162-325	187-325	200-325	275-325
3.50	106-350	125-350	162-350	187-350	200-350	275-350
3.75		125-375	162-375	187-375	200-375	275-375
4.00		125-400	162-400	187-400	200-400	275-400
4.50		125-450	162-450	187-450	200-450	275-450
5.00		125-500	162-500	187-500	200-500	275-500
5.50		125-550	162-550	187-550	200-550	275-550
6.00		125-600	162-600	187-600	200-600	275-600