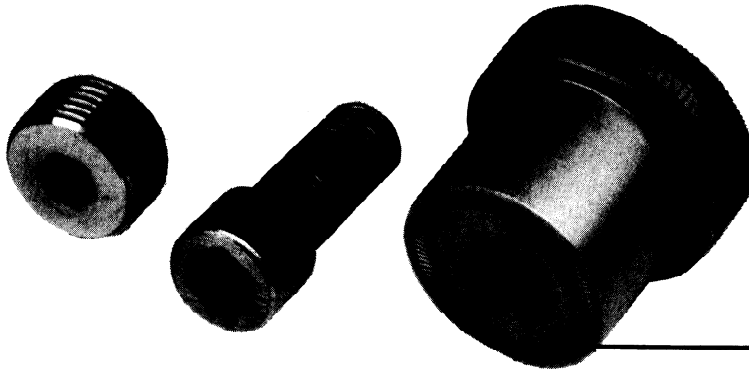




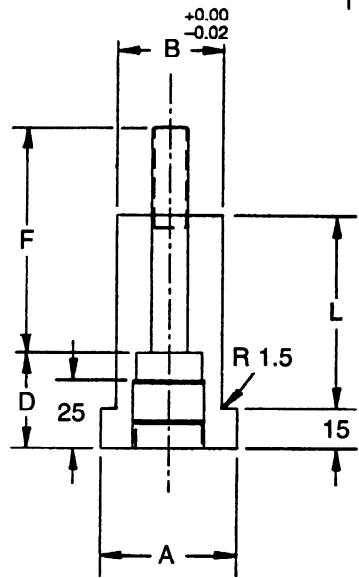
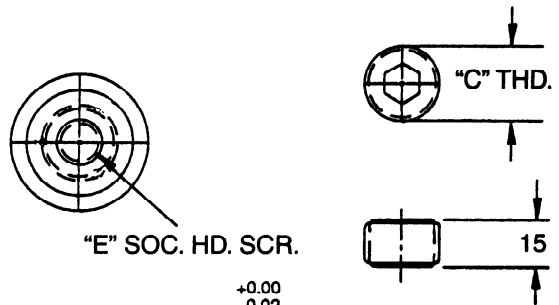
# SPOOL TYPE PAD RETAINER ASSEMBLIES



The mounting surface is knurled to provide lock-up and accuracy in mounting the spool to the base.

AUTOMOTIVE METRIC  
**NAAMS** STANDARD

NAAMS CODE	A	B	C	D	E	F	L	TENSILE STRENGTH
R315030						45	30	
R315040						55	40	
R315045						60	45	
R315050						65	50	
R315060						75	60	
R315065						80	65	
R315070	50	40	M27	35	M16	90	70	192 kN
R315075			X2		X2	90	75	
R315090						110	90	
R315010						120	100	
R315011						130	115	
R315013						150	130	
R315014						160	140	
R315016						180	160	
<hr/>								
R317040						55	40	
R317045						60	45	
R317050						65	50	
R317060						75	60	
R317065						80	65	
R317070						90	70	
R317075	70	60	M36	40	M20	90	75	299 kN
R317090			X3		X2.5	110	90	
R317010						120	110	
R317011						130	115	
R317013						150	130	
R317014						160	140	
R317016						180	160	



**MATERIAL SPECIFICATION:** Steel  
**NOTE:** Soc. Hd. Set Scr. and Soc. Hd. Scr. are included in assembly.