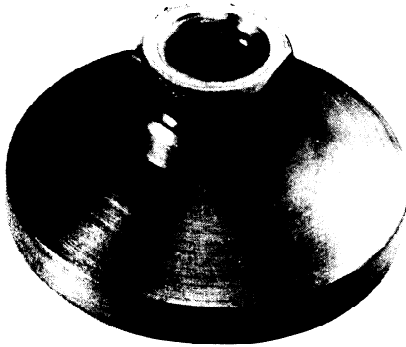




Vlier

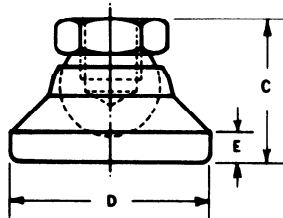
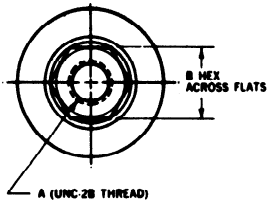
LEVELING PADS



SOCKET TYPE

Vlier leveling pads swivel 15° each side of the centerline to adjust to uneven surfaces. Large-diameter pad design assures solid support. Hardened ball prevents galling and forms to its own seat. Zinc plated and gold iridited to resist rust.

PART NUMBER				A	B	C	D	*E
DELTRIN	STEEL	ELASTOMER	STAINLESS					
NP304B	P304B	EP304B	SSP304B	3/8"-16	5/8"	7/8"	1 1/4"	3/16"
NP306B	P306B	EP306B	SSP306B	1/2"-13	3/4"	1 1/8"	1 7/8"	1/4"
NP308B	P308B	EP308B	SSP308B	5/8"-11	7/8"	1 1/4"	2 1/2"	5/16"
NP310B	P310B	EP310B	SSP310B	3/4"-10	1 1/16"	1 1/2"	3"	1/2"

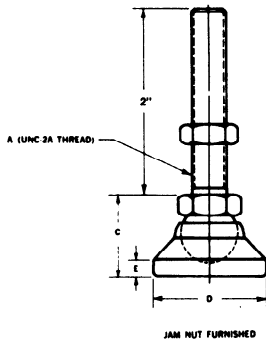
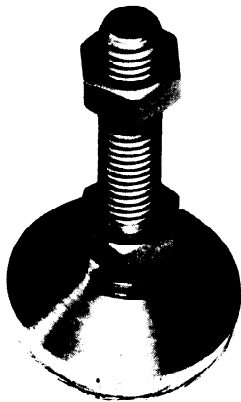


STUD TYPE (with Jam Nut)

Offering many leveling applications, the 2" long integral stud allows vertical adjustment to compensate for uneven floors. Jam nut secures the adjustment. Pad swivels 15° in all directions and automatically adjusts to uneven surfaces. Pad is zinc plated and gold iridited to resist rust.

PART NUMBER				LOAD, Lbs. STEEL PAD
DELTRIN	STEEL	*ELASTOMER	STAINLESS	
NP304S	P304S	EP304S	SSP304S	6,400
NP306S	P306S	EP306S	SSP306S	7,000
NP308S	P308S	EP308S	SSP308S	10,000
NP310S	P310S	EP310S	SSP310S	13,500

*Add 1/8" to E dim. for EP Series Elastomer Pad



Both the socket type and the stud type are also available with Delrin pads.

APPLICATIONS

- Machine Tools
- Electronic Racks
- Benches
- Surface Plates
- Office Equipment
- Computer Equipment
- Appliances
- Vibrators

