



TOOLING COMPONENTS

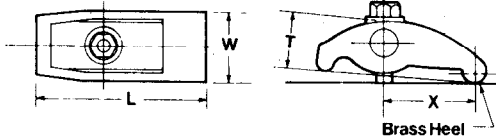
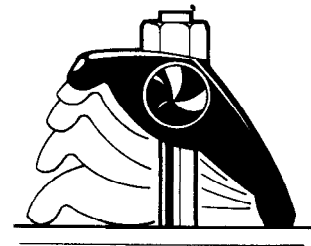
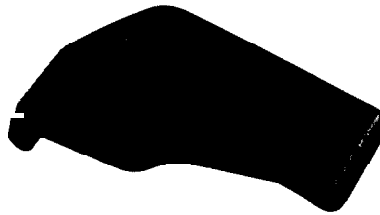
Forged Adjustable Clamps

The Ideal, Universal Forged Clamp. One-Piece Unit — No Parts To Get Lost.

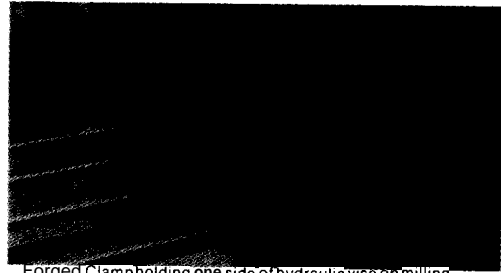
The most versatile clamps on the market.

Forged adjustable clamps automatically compensate for clamping height changes within their clamping ranges (see chart for ranges.) The swivel bushing is permanently mounted in the clamp to avoid lost or missing parts, while a brass heel plate will protect your machine tables.

Clamps are made from 1137 forged steel, heat treated for strength and long life, with a black penetrate finish.



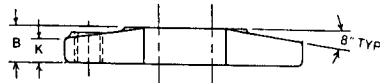
PART NUMBER	BOLT SIZE	CLAMPING CAPACITY	W	T	L	X	WT. #
19101	1/2	0-2	1 3/4	1 1/2	4 1/4	2 1/2	2.2
19102	5/8	0-2 3/8	2	1 9/8	5	3	3.5
19103	3/4	0-2 3/4	2 1/2	1 3/4	6 1/4	3 3/4	7.0
19104	7/8-1.0	0-3 1/2	3	2 3/8	7	4 1/4	11.6



Forged Clamp holding one side of hydraulic vise on milling machine table

Forged Strap Clamps

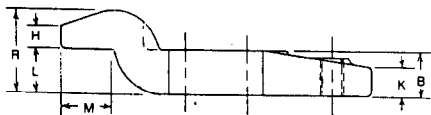
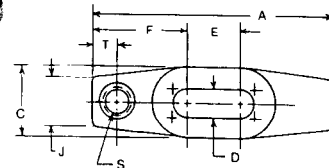
Forged steel Strap clamps for heavy-duty applications. Heel and gooseneck clamps available with tapped hole in back of clamp. Use with heavy-duty washers



Standard & Tapped Heel Clamps

Part Number		A	B	C	D	E	F	J	K	S*	T
Standard	Tapped										
37201	37202	4	3/4	1-5/8	1 1/16	1 1/16	1-21/32	1-3/16	1/2	1/2-13	1/2
37203	37204	6	7/8	1-3/4	1 1/16	1-3/8	2-5/16	1-1/4	9/16	5/8-11	5/8
37205	37206	8	1-1/8	2-1/8	13/16	2	7	1-1/2	3/4	3/4-10	3/4
37207	37208	10	1-3/8	2-1/2	15/16	2-3/4	8-5/8	1-3/4	15/16	7/8-9	7/8

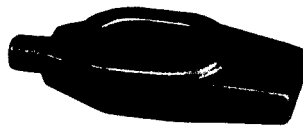
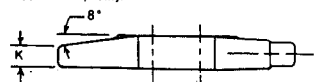
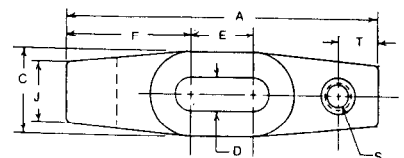
*Applicable to Tapped Clamp Only.



Standard & Tapped Gooseneck Clamps

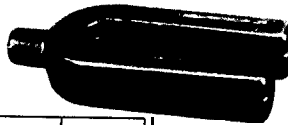
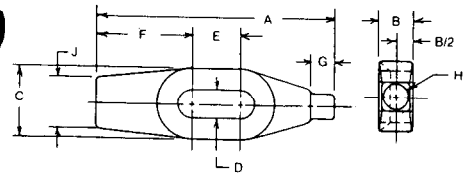
Part Number		A	B	C	D	E	F	G	H	J	K	
Standard	Tapped											
37211	37212	4	3/4	1-5/8	1 1/16	1/4	1-7/8	3/8	1-3/16	1/2	13/16	3/4
37213	37214	6	7/8	1-3/4	1 1/16	1	2-1/2	7/16	1-1/4	9/16	15/16	1-1/8
37215	37216	8	1-1/8	2-1/8	13/16	1-5/8	3-3/16	9/16	1-1/2	3/4	1-1/8	1-1/4

*Applicable to Tapped Clamp Only.



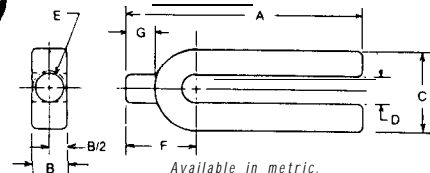
Finger Clamps

PART NUMBER	A	B	C	D	E	F	G	H	J	K
37221	4	3/4	1-5/8	1 1/16	1 1/16	1-21/32	1/2	1/2	1-3/16	7/16
37223	6	7/8	1-3/4	1 1/16	1-1/4	2-3/8	5/8	5/8	1-1/4	1/2
37225	8	1-1/8	2-1/8	13/16	1-3/4	3-1/8	3/4	3/4	1-1/2	5/8



"U" Clamps

PART NUMBER	A	B	C	D	E	F	G
37231	4	3/4	1-3/4	1 1/16	9/16	1-7/16	9/16
37232	6	7/8	2	1 1/16	1 1/16	1-11/16	1 1/16
37233	8	1-1/8	2-3/8	13/16	13/16	2	13/16
37234	10	1-1/4	2-3/4	15/16	15/16	2-5/16	15/16
37235	12	1-3/8	3-1/4	1-1/16	1-1/16	2-11/16	1-1/16



Available in metric.