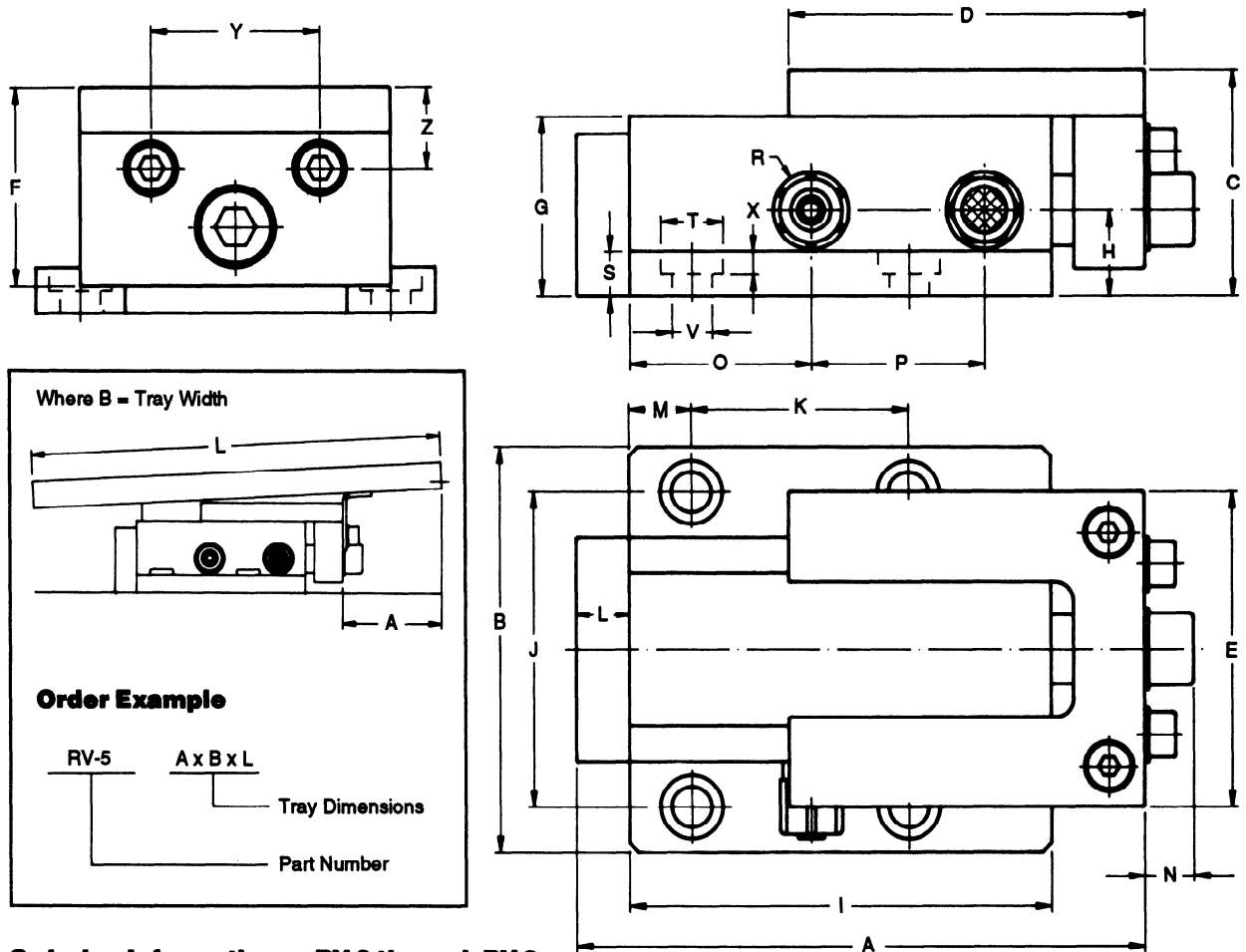




Raymond®



Ordering Information — RV-3 through RV-9

Order Number	A	B	C	D	E	F	G	H	I	J	K	L
RV-3	128 / 5.04	90 / 3.54	48 / 1.89	80 / 3.15	70 / 2.76	44 / 1.73	38 / 1.50	19 / .75	95 / 3.74	70 / 2.76	49 / 1.93	12 / .47
RV-5	155 / 6.10	100 / 3.94	65 / 2.56	90 / 3.54	80 / 3.15	60 / 2.36	55 / 2.17	27 / 1.06	118 / 4.65	82 / 3.23	60 / 2.36	12 / .47
RV-7	158 / 6.22	122 / 4.80	88 / 3.47	100 / 3.94	100 / 3.94	80 / 3.15	78 / 3.07	36 / 1.42	118 / 4.65	104 / 4.09	60 / 2.36	12 / .47
RV-9	179 / 7.05	150 / 5.91	108 / 4.25	120 / 4.72	125 / 4.92	98 / 3.86	95 / 3.74	48 / 1.89	130 / 5.12	130 / 5.12	65 / 2.56	14 / .55

Order Number	M	N	O	P	R	S	T	V	X	Y	Z
RV-3	14 / .55	12.5 / .49	41 / 1.61	39 / 1.54	3.2 / .125	10 / .39	14 / .55	9 / .35	5 / .20	38 / 1.50	16 / .63
RV-5	15 / .59	19 / .75	47 / 1.85	49 / 1.93	6.4 / .250	12 / .47	14 / .55	9 / .35	8 / .32	48 / 1.89	16 / .63
RV-7	15 / .59	19 / .75	47 / 1.85	49 / 1.93	6.4 / .250	14 / .55	14 / .55	9 / .35	9 / .35	64 / 2.52	16 / .63
RV-9	20 / .79	24 / .95	52 / 2.05	56 / 2.21	9.5 / .375	18 / .71	17 / .67	11 / .43	11 / .43	75 / 2.95	23 / .91

Technical Data

Order Number	Power	Working Pressure (psi)	Air Consumption (ft³/min)	Max. Piston Stroke	Piston Speed (ft/min)	Max. Mounting Inclination	Maximum Load (lbs)	Noise Level (dB-A)	Working Temperature (°F)
RV-3	Air	51-58	1.1	35 / 1.38	26-32	8°	13.2	50	32 - 158
RV-5	Air	51-58	2.1	37 / 1.46	26-32	8°	30.9	50	32 - 158
RV-7	Air	51-58	5.1	37 / 1.46	26-32	8°	79.4	50	32 - 158
RV-9	Air	51-58	7.6	45 / 1.77	26-32	8°	123.5	53	32 - 158

Dimensions in *millimeters* / inches