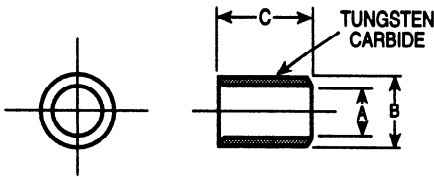


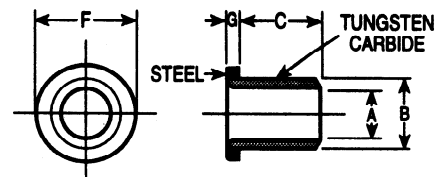


OBERG CARBIDE PUNCH & DIE / PRECISION TOLERANCE CARBIDE DRILL JIG BUSHINGS PRESS FIT TYPE "CP" AND "CH"

HEADLESS PRESS FIT TYPE "CP"



HEAD PRESS FIT TYPE "CH"



STANDARD DRILL SIZE A	ACTUAL O.D. B	LENGTH C	SYMBOL FOR O.D. FINISH GROUND	STANDARD DRILL SIZE A	ACTUAL O.D. B	LENGTH C	SYMBOL FOR O.D. FINISH GROUND	STANDARD DRILL SIZE A	ACTUAL O.D. B	LENGTH C	SYMBOL FOR O.D. FINISH GROUND	TYPE "CH" ONLY	
												F	G
.0135 to .0200	.1578	1/4"	CP-10-4 CP-10-5	.4375 to .5000	.7518	1/2"	CP-48-8 CP-48-12 CP-48-16 CP-48-22	.0630 to .0995	.2046	5/16"	CH-13-5 CH-13-8	19/64"	3/32"
	.1575	5/16"			.2043	1/2"							
.0210 to .0312	.1578	1/4"	CP-10-4 CP-10-5	.5156 to .6250	.8768	3/4"	CP-56-12 CP-56-16 CP-56-22 CP-56-28	.1015 to .1360	.2516	5/16"	CH-16-5 CH-16-8	23/64"	3/32"
	.1575	5/16"			.8765	1"			.2513	1/2"			
.0320 to .0469	.1578	1/4"	CP-10-4 CP-10-5 CP-10-8	.6406 to .7500	1.0018	1/2"	CP-64-8 CP-64-12 CP-64-16 CP-64-22 CP-64-28	.1405 to .1875	.3141	5/16"	CH-20-5 CH-20-8 CH-20-12 CH-20-16	27/64"	1/8"
	.1575	5/16"			1"	.3138			3/4"	1"			
.0630 to .0995	.2046	1/4"	CP-13-4 CP-13-5 CP-13-8	.7656 to 1.0000	1.3772	3/4"	CP-88-12 CP-88-16 CP-88-22 CP-88-28 CP-88-34 CP-88-40	.1890 to .2500	.4078	5/16"	CH-26-5 CH-26-8 CH-26-12 CH-26-16	1/2"	5/32"
	.2043	5/16"			1"	.4075			1/2"	1"			
.1015 to .1360	.2516	1/4"	CP-16-4 CP-16-5 CP-16-8	1.0156 to 1.3750	1.7523	1"	CP-112-16 CP-112-22 CP-112-28 CP-112-34 CP-112-40 CP-112-48	.2570 to .3125	.5017	5/16"	CH-32-5 CH-32-8 CH-32-12 CH-32-16 CH-32-22	39/64"	7/32"
	.2513	5/16"			1-3/8"	1.3768			1-3/4"	1"			
.1405 to .1875	.3141	5/16"	CP-20-5 CP-20-8 CP-20-12 CP-20-16	1.3906 to 1.7500	2.2525	1-3/8"	CP-144-16 CP-144-22 CP-144-28 CP-144-34 CP-144-40 CP-144-48	.3160 to .4219	.6267	1/2"	CH-40-8 CH-40-12 CH-40-16 CH-40-22	51/64"	7/32"
	.3138	1/2"			1"	1.7519			1-3/4"	1"			
.1890 to .2500	.4078	1/2"	CP-26-5 CP-26-8 CP-26-12 CP-26-16	.2570 to .3125	2.2521	2-1/8"	CP-144-16 CP-144-22 CP-144-28 CP-144-34 CP-144-40 CP-144-48	.4375 to .5000	.7518	1/2"	CH-48-8 CH-48-12 CH-48-16 CH-48-22	59/64"	7/32"
	.4075	3/4"			1"	1.7515			1-3/8"	1"			
.2570 to .3125	.5017	1/2"	CP-32-5 CP-32-8 CP-32-12 CP-32-16 CP-32-22	.6406 to .7500	1.0018	1-3/8"	CH-56-12 CH-56-16 CH-56-22 CH-56-28	.5156 to .6250	.8768	3/4"	CH-64-8 CH-64-12 CH-64-16 CH-64-22	1-7/64"	1/4"
	.5014	3/4"			1"	1.0015			1-3/4"	1"			
.3160 to .4219	.6267	3/4"	CP-40-8 CP-40-12 CP-40-16 CP-40-22	.7656 to 1.0000	1.3772	1"	CH-88-12 CH-88-16 CH-88-22 CH-88-28 CH-88-34 CH-88-40	.6406 to .7500	1.0018	1/2"	CH-88-12 CH-88-16 CH-88-22 CH-88-28 CH-88-34 CH-88-40	1-15/64"	5/16"
	.6264	1"			1-3/8"	1.0015			3/4"	1"			
.3160 to .4219	.6267	3/4"	CP-40-8 CP-40-12 CP-40-16 CP-40-22	.7656 to 1.0000	1.3772	1-3/8"	CH-112-16 CH-112-22 CH-112-28 CH-112-34 CH-112-40 CH-112-48	.7656 to 1.0000	1.3772	3/4"	CH-112-16 CH-112-22 CH-112-28 CH-112-34 CH-112-40 CH-112-48	1-39/64"	3/8"
	.6264	1"			1-3/8"	1.3768			1"	1-3/4"			
.3160 to .4219	.6267	3/4"	CP-40-8 CP-40-12 CP-40-16 CP-40-22	1.0156 to 1.3750	1.7523	2-1/8"	CH-144-16 CH-144-22 CH-144-28 CH-144-34 CH-144-40 CH-144-48	1.0156 to 1.3750	1.7523	1"	CH-144-16 CH-144-22 CH-144-28 CH-144-34 CH-144-40 CH-144-48	2-31/64"	3/8"
	.6264	1"			2-1/2"	1.7519			1-3/8"	1-3/4"			
.3160 to .4219	.6267	3/4"	CP-40-8 CP-40-12 CP-40-16 CP-40-22	1.3906 to 1.7500	2.2525	3"	CH-144-16 CH-144-22 CH-144-28 CH-144-34 CH-144-40 CH-144-48	1.3906 to 1.7500	2.2525	1-3/8"	CH-144-16 CH-144-22 CH-144-28 CH-144-34 CH-144-40 CH-144-48	2-31/64"	3/8"
	.6264	1"			2-1/2"	2.2521			1-3/4"	2-1/8"			

NOTE: ANY DIMENSION OTHER THAN THOSE SHOWN QUOTED ON REQUEST

Hole Tolerances:

- Up to 1/4" +.0001 to +.0004
- Up to 3/4" +.0001 to +.0005
- Up to 1-1/2" +.0002 to +.0006
- Over 1-1/2" +.0003 to +.0007

Bodies of Carbide Bushings are solid Tungsten Carbide; Type "CH", "CSR" and "CFR" have Steel Heads. Concentricity held to within .0003.

All Removable Slip Fit Standard A.S.A. Carbide Bushings are ground on the O.D. with a Slip Fit clearance to fit into a Standard A.S.A. Steel Liner Bushing.